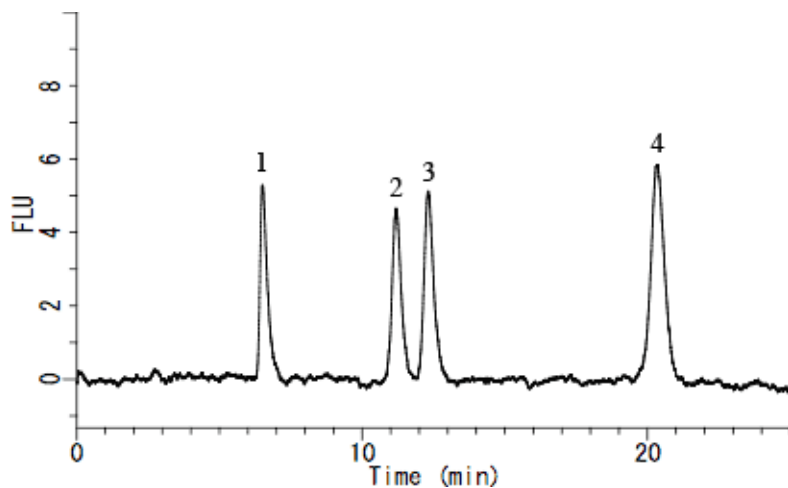


# Analysis of Vitamin E in Food



<b>System</b>	: GL-7400 system	<b>Solutes</b>	: 1. dl- $\alpha$ -tocopherol (25 $\mu$ g/L)
<b>Column</b>	: Inertsil NH2 (5 $\mu$ m, 250 $\times$ 4.6 mm I.D.)		2. dl- $\beta$ -tocopherol (25 $\mu$ g/L)
<b>Column Cat. No.</b>	:		3. dl- $\gamma$ -tocopherol (25 $\mu$ g/L)
<b>Eluent</b>	: A) CH <sub>3</sub> COOH B) 2-Propanol C) Hexane		4. dl- $\delta$ -tocopherol (25 $\mu$ g/L)
	A/B/C = 5/6/1000, v/v		
<b>Flow rate</b>	: 1.2 mL/min.		
<b>Col. Temp.</b>	: 40 °C		
<b>Detection</b>	: FL Ex 298 nm Em 330 nm (GL-7453A FL Detector)		
<b>Injection Vol.</b>	: 20 $\mu$ L		
<b>Sample</b>	:		