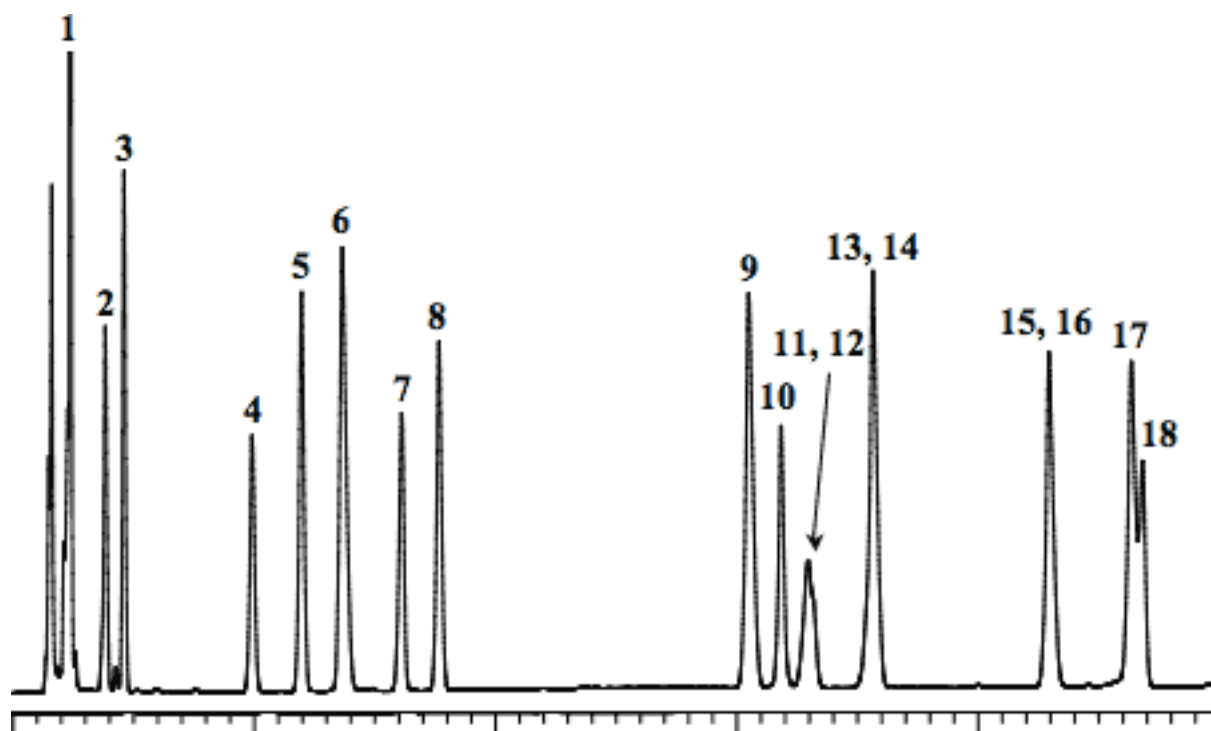


Analysis of Food Dyes

Data No. LA509-0734



System	: GL-7400 system	Solutes	: 1. Tartrazine (Food Yellow No. 4, 7.6 mg/L)
Column	: Inertsil ODS-3 (5µm, 150 × 4.6 mm I.D.)		2. Amaranth (Food Red No. 2, 3.8 mg/L)
Column Cat. No. :			3. Ingigocarmine (Food Blue No. 2, 7.6 mg/L)
Eluent	: A) CH ₃ CN B) 10mM Na ₂ HPO ₄ A/B = 10/90 - 50 min. - 35/65		4. New coccine (Food Red No. 102, 3.8 mg/L)
Flow rate	: 1.0 mL/min.		5. Sunset Yellow FCF (Food Yellow No. 5, 5.3 mg/L)
Col. Temp.	: 40 °C		6. Naphthol Yellow S (7.6 mg/L)
Detection	: PDA 200 - 700 nm (270 nm, GL-7452 PDA Detector)		7. Uranine (3.8 mg/L)
Injection Vol.	: 10 µL		8. Allura red AC (5.3 mg/L)
Sample	: Food Dyes		9. Ponceau R (7.6 mg/L)
			10. Ponceau SX (5.3 mg/L)
			11. Orange I (5.3 mg/L)
			12. Fast green FCF (Food Green No. 3, 3.0 mg/L)
			13. Brilliant blue FCF (Food Blue No. 1, 3.0 mg/L)
			14. Ponceau 3R (7.6 mg/L)
			15. Erythrosine (Food Red No. 3, 5.3 mg/L)
			16. Azure Blue VX (Sulfan blue, 3.0 mg/L)
			17. Orange II (7.6 mg/L)
			18. Acid red (Food Red No. 106, 3.0 mg/L)