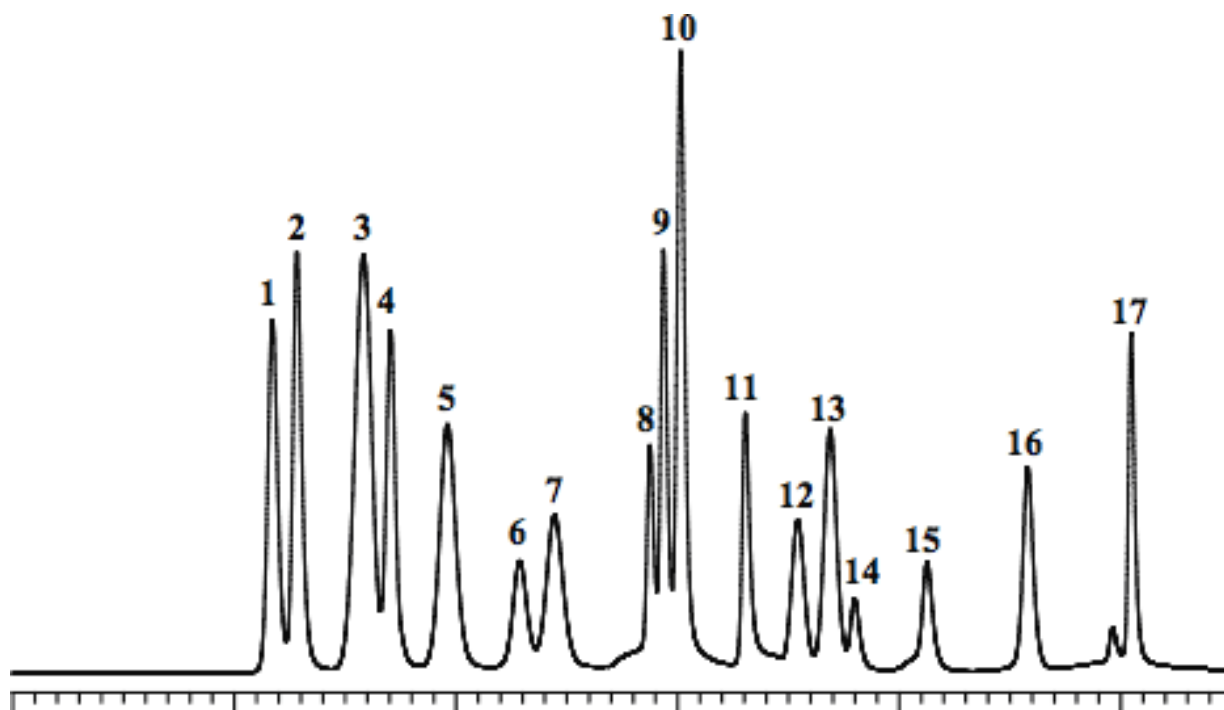


## Analysis of Sugars (detected by Post Column method)

Data No. LA511-0000



System : GL-7400 system

Column : Asahipak NH2P-50 4E (250 x 4.6 mm I.D.)

Column Cat. No. : 5055-12611

Eluent :

Flow rate : 1.0 mL/min.

Col. Temp. : 40 °C

Detection : FL Ex 330 nm Em 470 nm (GL-7453 FL Detector)

Injection Vol. : 10 µL

Sample : Sugars

Solutes : 1. Rhamnose (100 µg/mL)

2. Ribose (100 µg/mL)

3. Fucose (100 µg/mL)

4. Xylose (100 µg/mL)

5. Arabinose (100 µg/mL)

6. Sorbose (100 µg/mL)

7. Fructose (100 µg/mL)

8. Mannose (100 µg/mL)

9. Glucose (100 µg/mL)

10. Galactose (100 µg/mL)

11. Sucrose (100 µg/mL)

12. Maltose (100 µg/mL)

13. Lactose (100 µg/mL)

14. Trehalose (100 µg/mL)

15. Kestose (100 µg/mL)

16. Raffinose (100 µg/mL)

17. Stachyose (100 µg/mL)