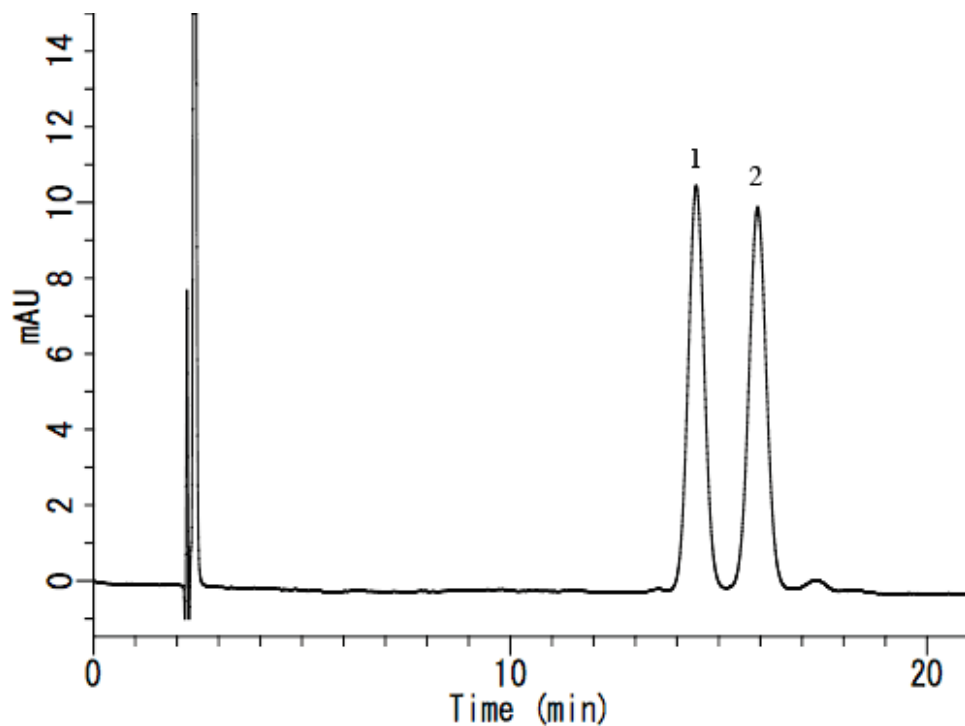


## Analysis of Carotene in Food

Data No. LA517-0696



System : GL-7400 system

Column : Inertsil ODS-P (5  $\mu$  m, 250 x 4.6 mm I.D.)

Column Cat. No. : 5020-02002

Eluent : A) CH<sub>3</sub>OH  
B) C<sub>2</sub>H<sub>5</sub>OH  
A/B = 90/10, v/v

Flow rate : 1.0 mL/min.

Col. Temp. : 40 °C

Detection : PDA 455 nm (GL-7452A PDA Detector)

Injection Vol. : 20  $\mu$  L

Sample :

Solutes : 1.  $\alpha$ -Carotene ( 2.0mg/L )

2.  $\beta$ -Carotene ( 2.0mg/L )