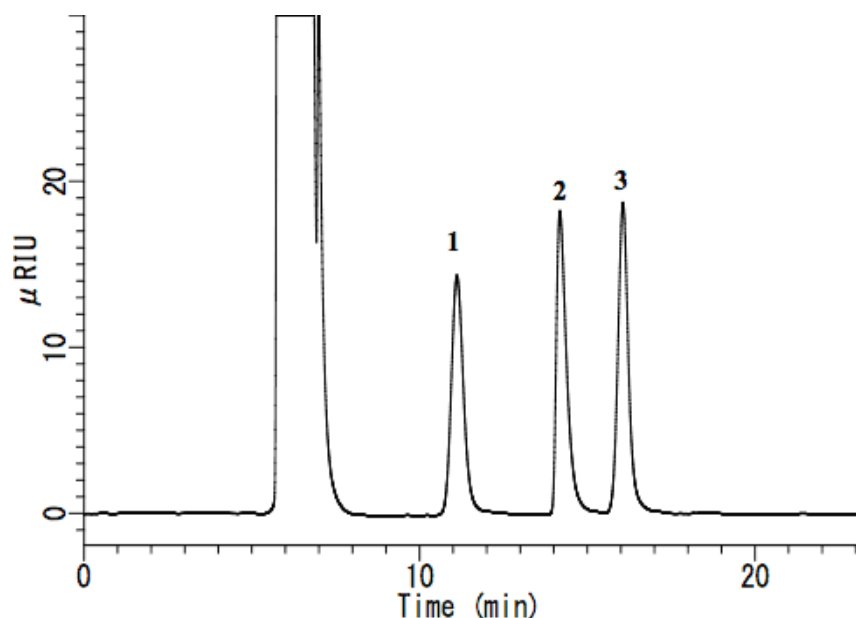


Analysis of food additives

Data No. LA519-0696



System : GL-7400 system

Column : Inertsil NH2 (5 μm , 250 \times 4.6 mm I.D.)

Column Cat. No. :

Eluent : A) CH_3CN

B) H_2O

A/B = 65/35, v/v

Flow rate : 0.5 mL/min

Col. Temp. : 40 $^\circ\text{C}$

Detection : RI (GL-7454 RI detector)

Injection Vol. : 10 μL

Sample : N-Acetyl-D-Glucosamine, Betaine, myo-Inositol

Solutes : 1. N-Acetyl-D-Glucosamine (2000 mg/L)

2. Betaine (2000 mg/L)

3. myo-Inositol(2000 mg/L)