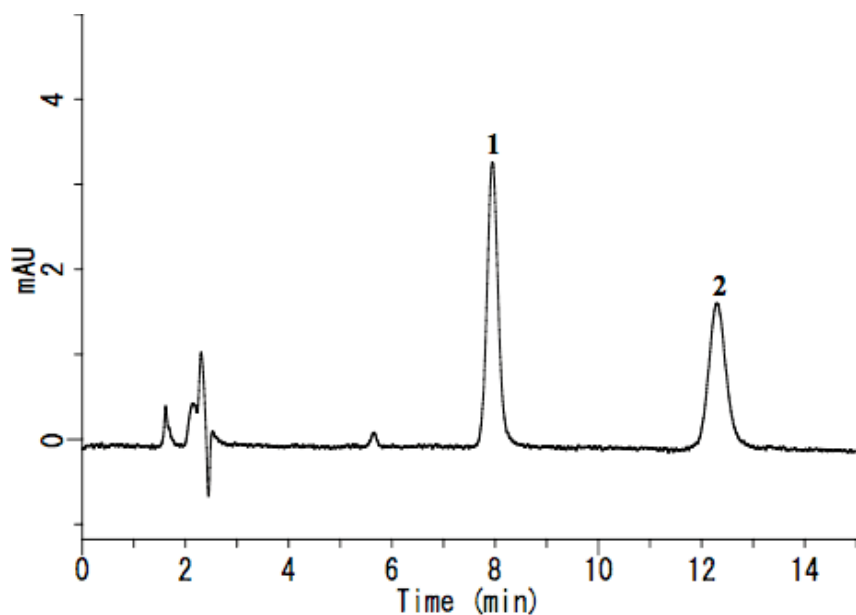


# InertSearch™ for LC

Inertsil® Applications

## Analysis of sweeteners

Data No. LA520-0696



System : GL-7400 system

Column : Inertsil NH2 (5  $\mu$  m, 150  $\times$  4.6 mm I.D.)

Column Cat. No. :

Eluent : A) CH<sub>3</sub>CN

B) H<sub>2</sub>O

A/B = 80/20, v/v

Flow rate : 1.0 mL/min

Col. Temp. : 40 °C

Detection : UV 210 nm (GL-7452A PDA detector)

Injection Vol. : 20  $\mu$  L

Sample : Sweeteners

Solutes : 1. Stevioside( 10 mg/L )

2. Rebaudioside A( 10 mg/L )