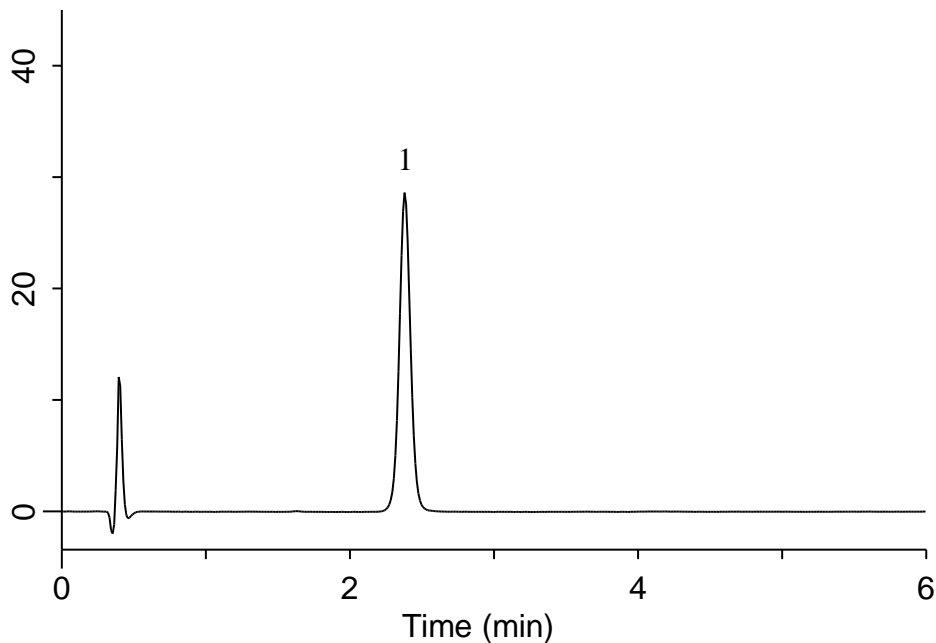


## Analysis of Resveratrol



### Conditions

**System** : GL7700 HPLC system  
**Column** : InertSustain C18  
 (3  $\mu$  m, 50 x 3.0 mmI.D.)  
**Column Cat. No.** : 5020-07422  
**Eluent** : A) CH<sub>3</sub>CN  
 B) H<sub>2</sub>O  
 A/B = 20/80, v/v  
**Flow Rate** : 1.0 mL/min  
**Col. Temp.** : 40 °C  
**Detection** : UV 310 nm (UV7750 UV Detector)  
**Injection Vol.** : 20  $\mu$  L  
**Sample** : Standard

### **Analyte:**

1. Resveratrol 1.0 mg/L