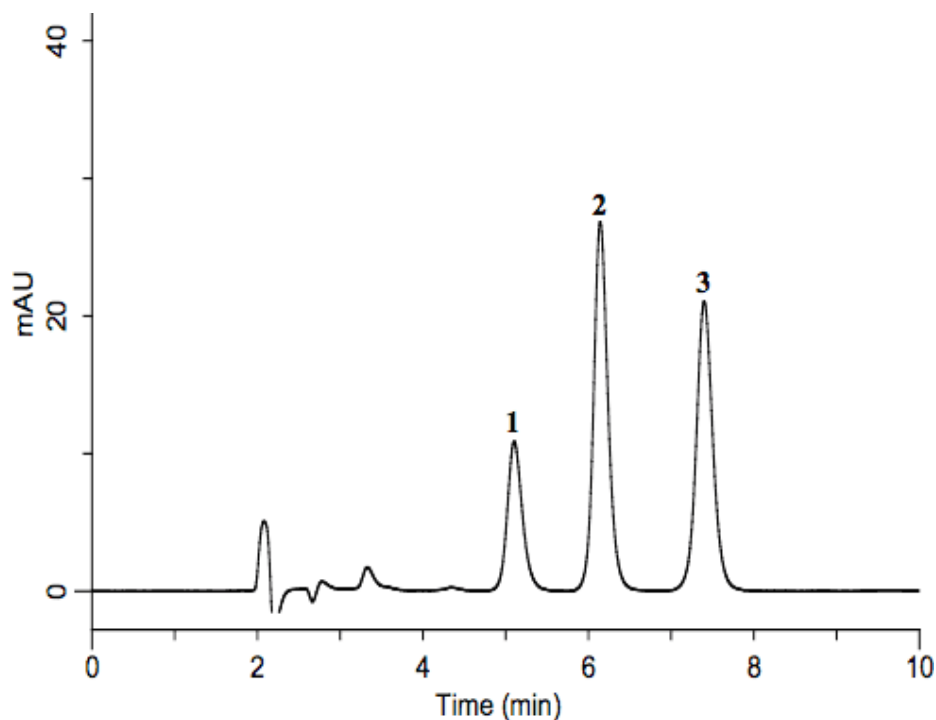


Analysis of Chlorogenic Acid

Data No. LA529-0811



System : GL-7400 system

Column : Inertsil ODS-SP (5 μ m, 150 \times 3.0 mm I.D.)

Column Cat. No. :

Eluent : A) CH₃OH

B) 5 mM KH₂PO₄ (pH2.5; H₃PO₄)

A/B = 30/70, v/v

Flow rate : 0.4 mL/min

Col. Temp. : 40 °C

Detection : UV 280 nm (GL-7452A PDA detector)

Injection Vol. : 10 μ L

Sample : Chlorogenic Acid

Caffeine

Caffeic Acid

Solutes : 1. Chlorogenic Acid (5 mg/L)

2. Caffeine(5 mg/L)

3. Caffeic Acid(5 mg/L)