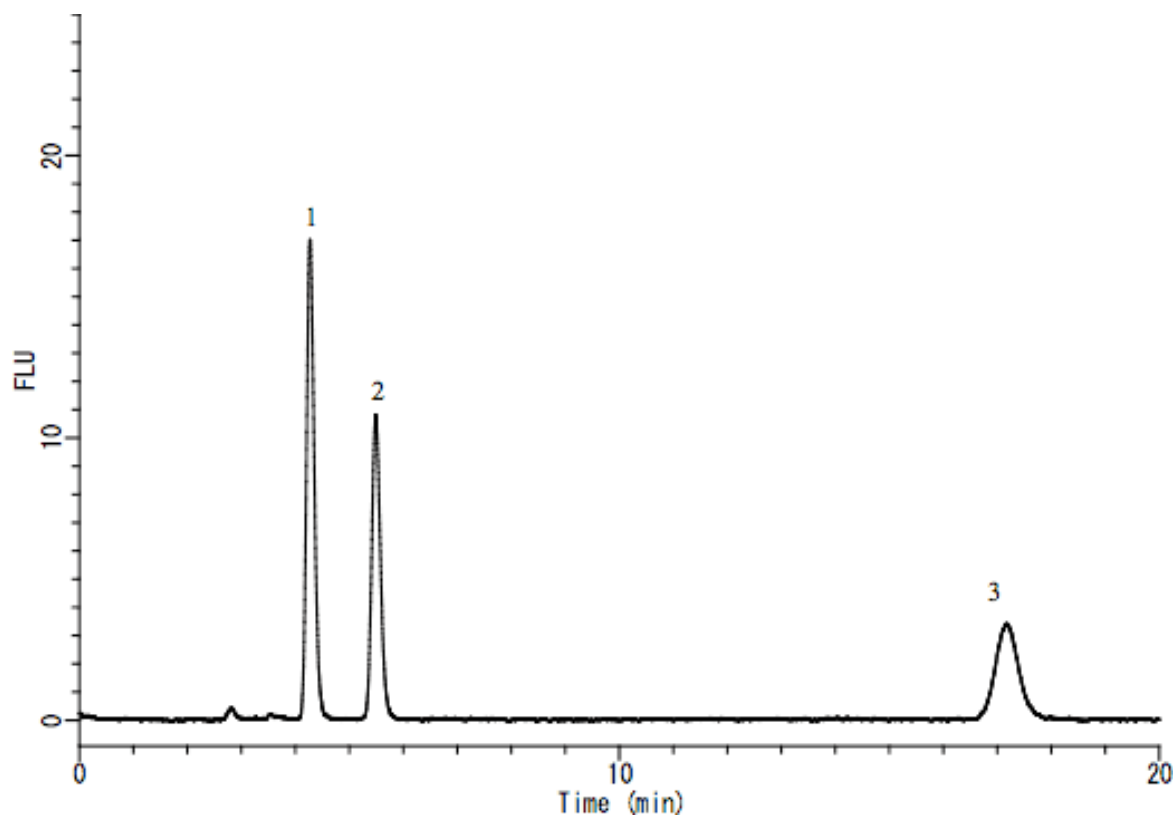


## Analysis of Retinol in Food

Data No. LA534-0696



System : GL-7400 system

Column : Inertsil ODS-3 (5 $\mu$ m, 250 x 4.6 mm I.D.)

Column Cat. No. :

Eluent : A) C<sub>2</sub>H<sub>5</sub>OH

B) H<sub>2</sub>O

A/B = 95/5, v/v

Flow rate : 1.0 mL/min.

Col. Temp. : 40 °C

Detection : FL Ex 340 nm Em 460 nm

Injection Vol. : 20  $\mu$ L

Sample :

Solutes : 1. Retinol 100 $\mu$ g/L

2. Retinol acetate 100 $\mu$ g/L

3. Retinol palmitate 100 $\mu$ g/L