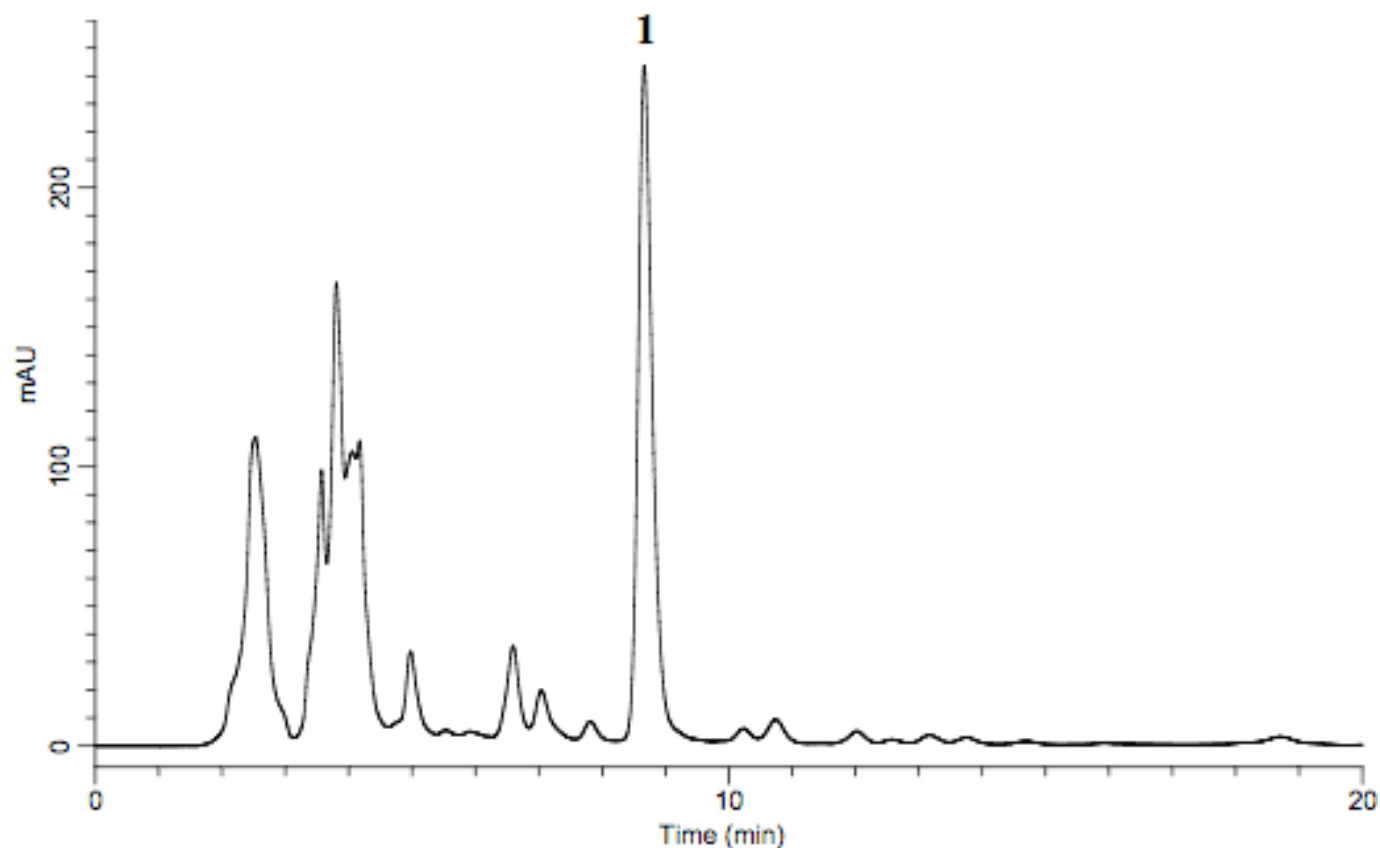


## Analysis of Glycyrrhiza Extract (Under the Condition of Japanese Pharmacopoeia)

Data No. LA551-0698



System :GL-7400 system  
Column :Inertsil ODS-SP (5  $\mu$  m, 150 $\times$ 4.6 mm I.D.)  
Column Cat. No.:  
Eluent : A) CH<sub>3</sub>CN  
          B) 2.1 % CH<sub>3</sub>COOH  
          A/B = 40/60 ,v/v  
Flow rate :0.6 mL/min  
Col. Temp. :30 °C  
Detection :PDA 254 nm (GL-7452A PDA detector)  
Injection Vol. :20  $\mu$  L  
Sample :Glycyrrhiza Extract (250.7 mg [before Extraction])

Solutes : 1. Glycyrrhetic acid