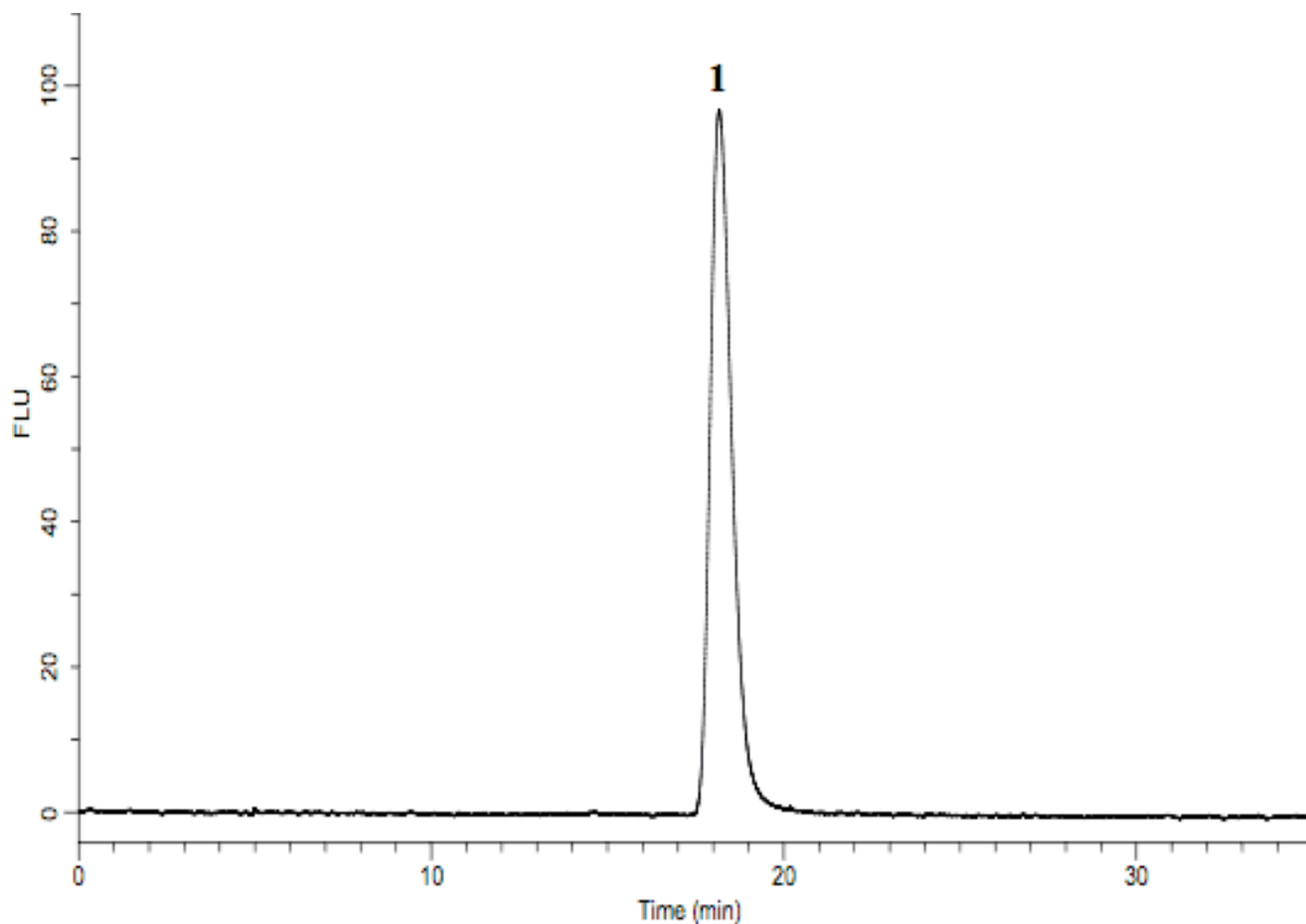


## Analysis of Voglibose by Post - Column HPLC (Under the Condition of Japanese Pharmacopoeia)

Data No. LA554-0698



System : GL-7400 system  
Column : Asahipak NH2P-50 4E (250×4.6 mm I.D.)  
Column Cat. No.:  
Eluent : A) CH<sub>3</sub>CN  
          B) 20 mM Na<sub>2</sub>HPO<sub>4</sub> (pH 6.5; 20 mM NaH<sub>2</sub>PO<sub>4</sub>)  
          A/B = 37/63, v/v (Gradient mixer)  
Flow rate : 0.5 mL/min.  
Col. Temp. : 25 °C  
Detection : FL Ex 350 nm Em 430 nm (GL-7453A FL detector)  
Injection Vol. : 50 μL  
Sample : Voglibose (12 mg/L)

Solutes : 1. Voglibose