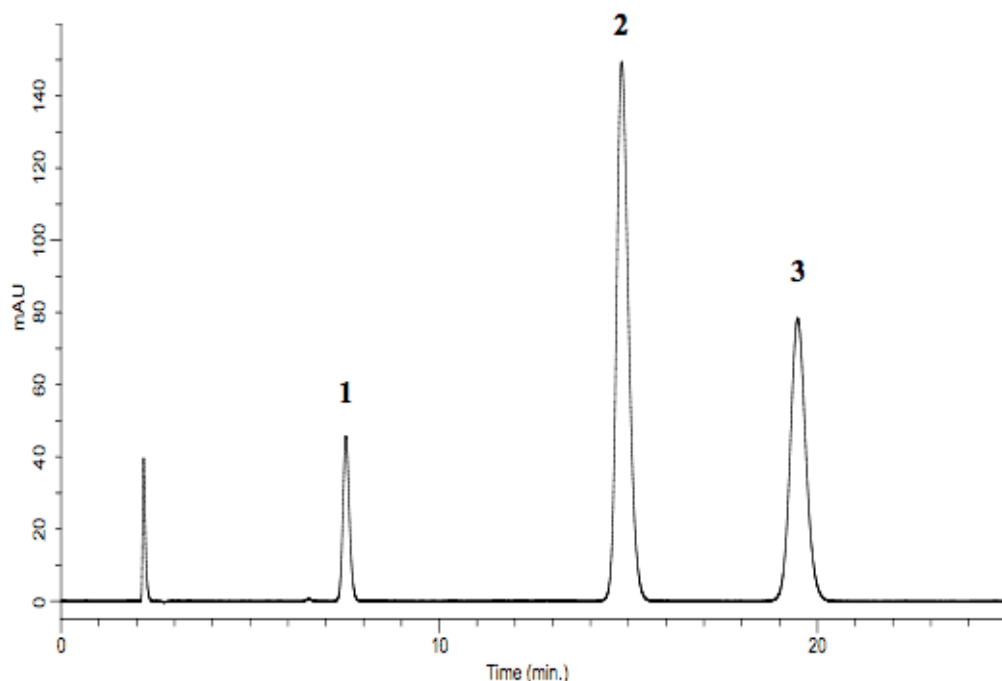


Analysis of Scopolia Standard (Under the Condition of Japanese Pharmacopoeia)

Data No. LA558-0696



*Resolution: Peak 1-2; 16.67, Peak 2-3; 7.11

System	:GL-7400 system	Solutes	: 1. Scopolamine Hydrobromide (0.10 mg/mL)
Column	:Inertsil ODS-SP (5 μ m, 150 \times 4.6 mm I.D.)		2. Atropine Sulfate (0.50 mg/mL)
Column Cat. No.:			3. Brucine (0.06 mg/mL)
Eluent	: A) CH ₃ CN B) 50 mM KH ₂ PO ₄ , 1 % (C ₂ H ₅) ₃ N ,v/v (pH 3.5, H ₃ PO ₄) A/B = 10/90		
Flow rate	:0.9 mL/min		
Col. Temp.	:30 °C		
Detection	:UV 210 nm (GL-7450 UV detector)		
Injection Vol.	:10 μ L		
Sample	:Scopolia Standards		