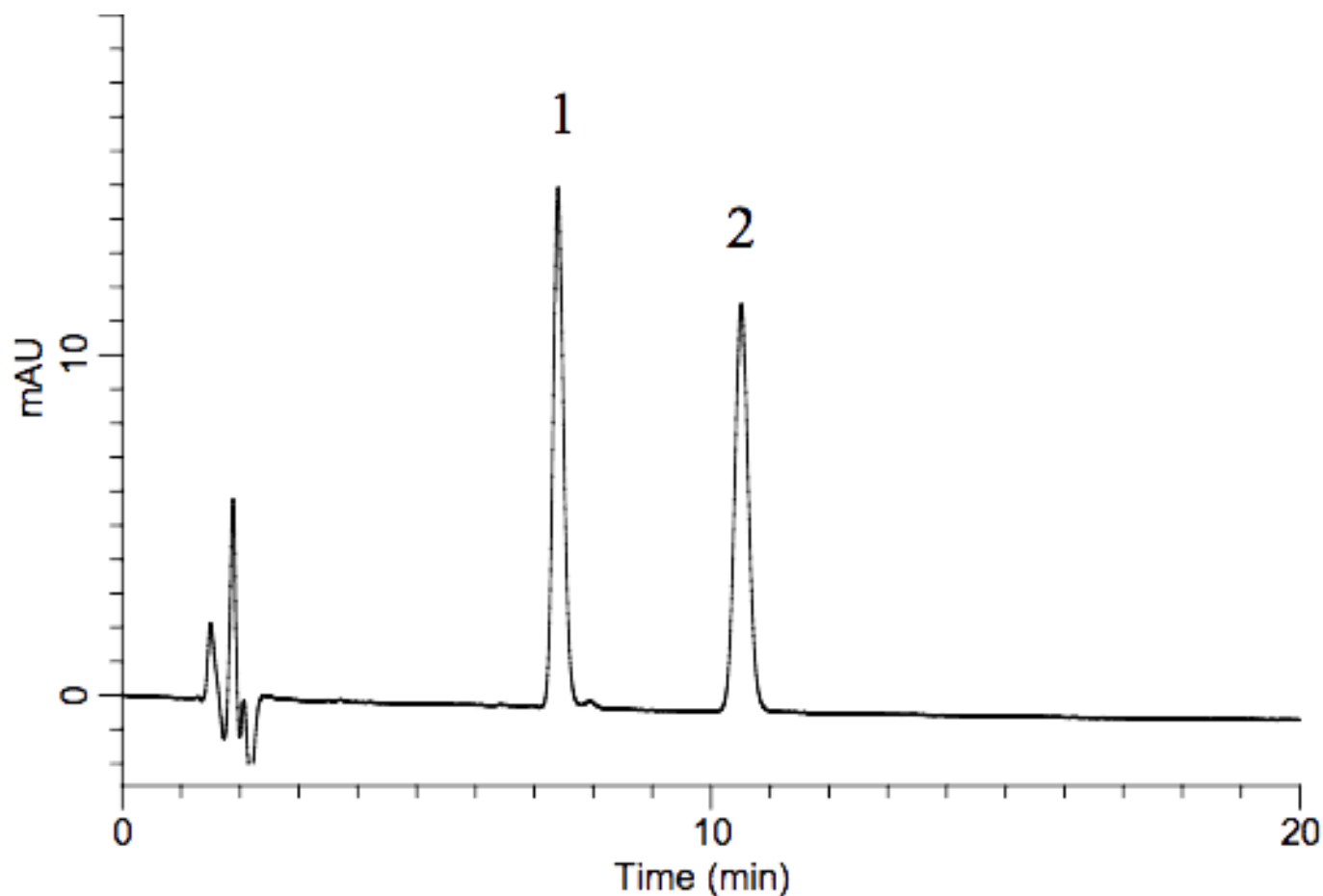


Analysis of Androsterone and Epiandrosterone

Data No. LA559-0000



System : GL-7400 HPLC system
Column : Inertsil ODS-3
(5 μ m, 150 \times 3.0 mm I.D.)
Column Cat. No. : 5020-01751
Eluent : A) CH₃CN
B) H₂O
A/B = 55/45, v/v (Mixed by a gradient mixer)
Flow rate : 0.4 mL/min.
Col. Temp. : 40 °C
Detection : PDA 190 — 400 nm (300 nm, GL-7452 PDA Detector)
Injection Vol. : 5 μ L
Sample : Steroid
Solutes : 1. Epiandrosterone (2.0 mg/mL CH₃OH)
2. Androsterone (2.0 mg/mL CH₃OH)