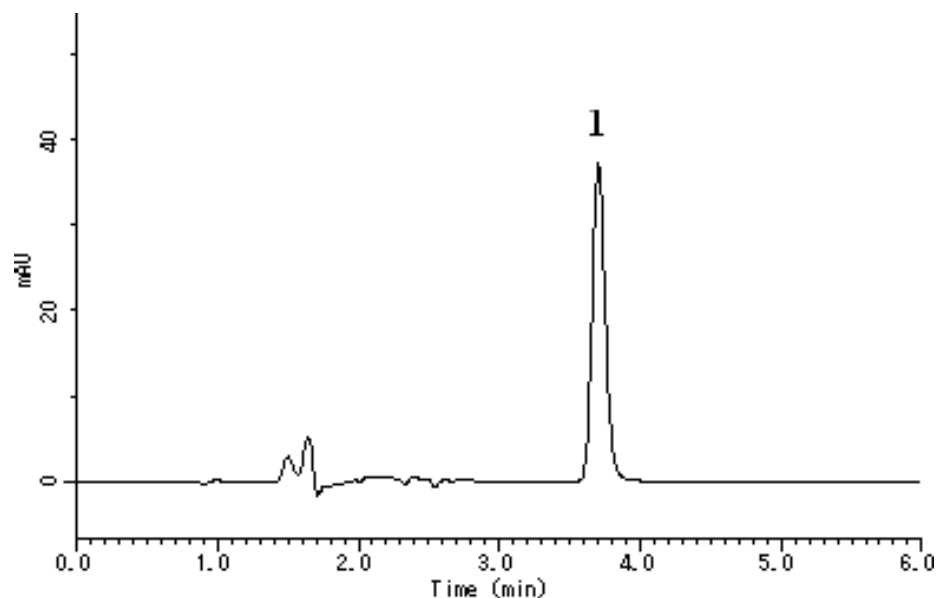


## Analysis of Diquat dibromide

Data No. LA572-0696



System : GL-7400 system  
Column : Inertsil ODS-3 (5  $\mu$ m, 150 x 4.6 mm I.D.)  
Column Cat. No. :  
Eluent : 0.2 M H<sub>3</sub>PO<sub>4</sub>, 0.1 M Diethylamine, 17 mM IPCC-05  
(IPCC-05: Sodium 1-Pentanesulfonate)  
Flow rate : 1.0 mL/min  
Col. Temp. : 40 °C  
Detection : PDA 313 nm (GL-7452A PDA Detector)  
Injection Vol. : 200  $\mu$ L  
Sample :

Solutes: 1. Diquat dibromide (0.5 mg/L)