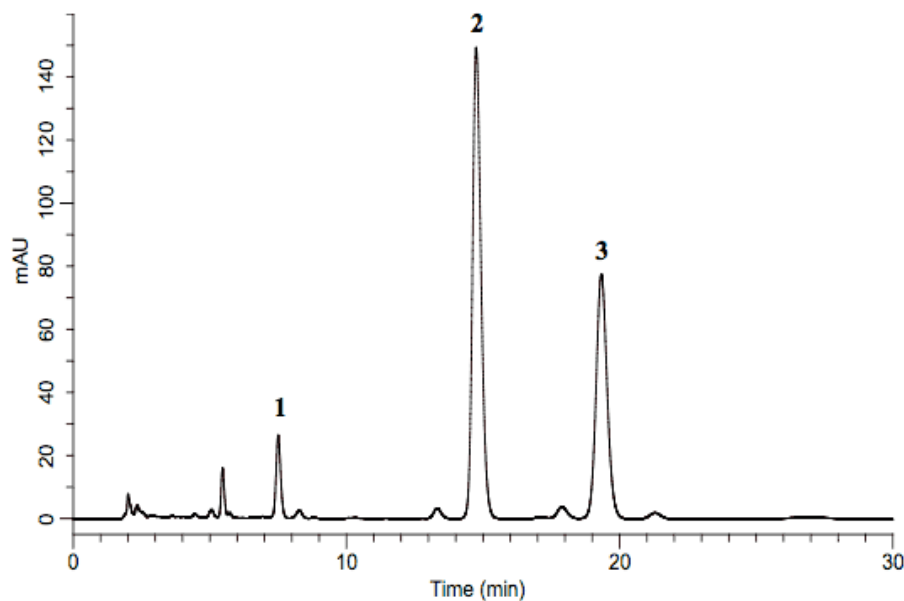


## Analysis of Scopolia Extract (Under the Condition of Japanese Pharmacopoeia)

Data No. LA573-0698



\*Resolution: Peak 1-2; 16.67, Peak 2-3; 7.11

|                   |   |                                |
|-------------------|---|--------------------------------|
| System            | : GL-7400 system  | Solutes: 1. Scopolamine        |
| Column            | : Inertsil ODS-SP (5 $\mu$ m, 150 $\times$ 4.6 mm I.D.)   | 2. Hyoscyamine                 |
| Column Cat. No. : |   | 3. Brucine (Internal Standard) |
| Eluent            | : A) CH <sub>3</sub> CN<br>B) 50 mM KH <sub>2</sub> PO <sub>4</sub> , 1 % (C <sub>2</sub> H <sub>5</sub> ) <sub>3</sub> N ,v/v (pH 3.5, H <sub>3</sub> PO <sub>4</sub> )<br>A/B = 10/90 |                                |
| Flow rate         | : 0.9 mL/min  |                                |
| Col. Temp.        | : 30 °C   |                                |
| Detection         | : UV 210 nm (GL-7450 UV detector)   |                                |
| Injection Vol.    | : 10 $\mu$ L  |                                |
| Sample            | : Scopolia Extract  |                                |