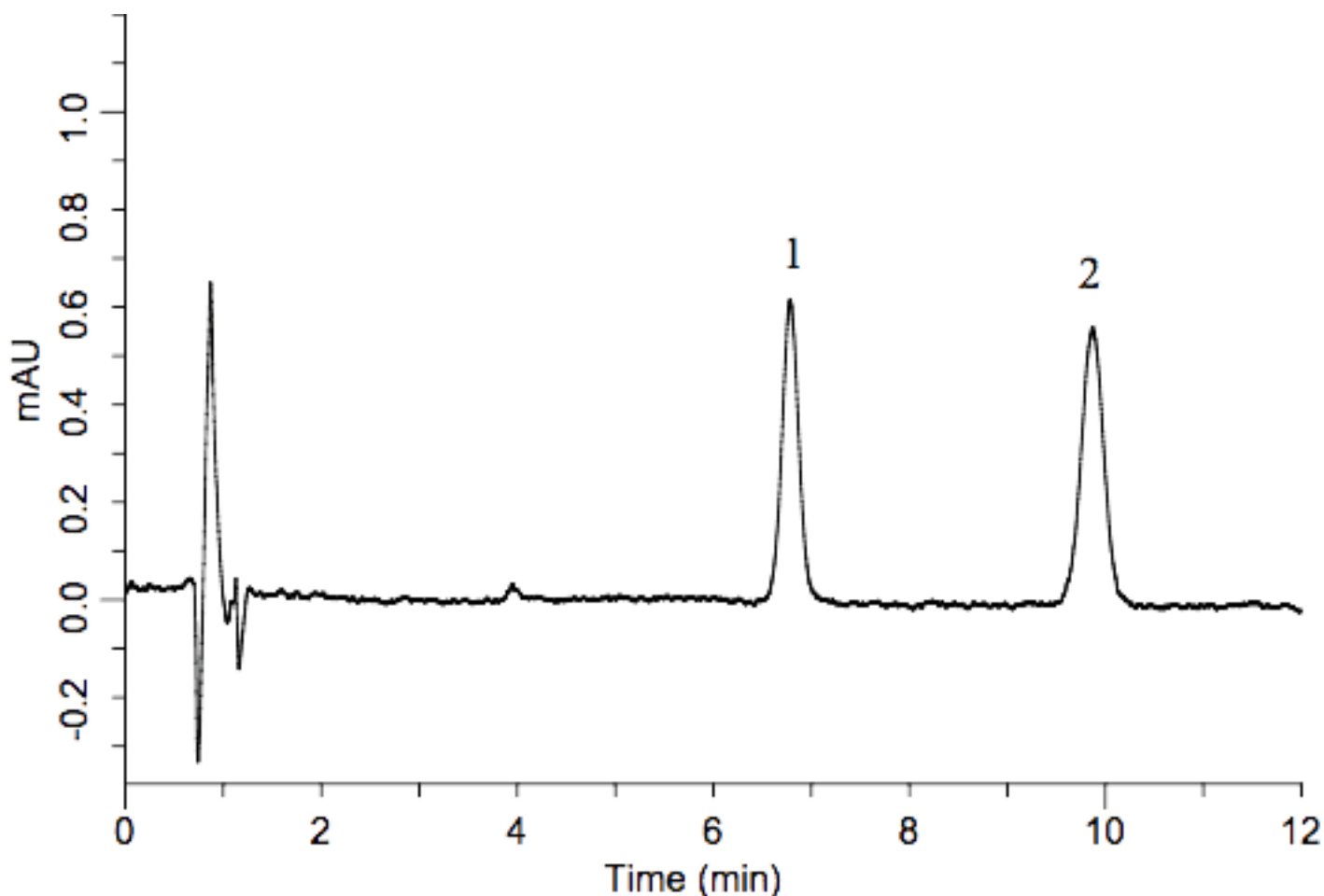


## Analysis of Prelabeled Tolylene diisocyanate (TDI)

Data No. LA574-0696



System	: GL-7400 HPLC System	Solutes : 1. 2,6-TDI-2-PP
Column	: Inertsil ODS-SP (5 $\mu$ m, 250 $\times$ 4.6 mm I.D.)	(500 $\mu$ g/L in CH <sub>3</sub> OH containing 0.05 % CH <sub>3</sub> COOH) 2. 2,4-TDI-2-PP
Column Cat. No.	: 5020-02746	(500 $\mu$ g/L in CH <sub>3</sub> OH containing 0.05 % CH <sub>3</sub> COOH)
Eluent	: A) CH <sub>3</sub> CN B) 0.1 M CH <sub>3</sub> COONH <sub>4</sub> (pH 6.2; CH <sub>3</sub> COOH) A/B = 30/70, v/v	2-PP: 1-(2-Pyridyl)piperazine
Flow rate	: 2.0 mL/min.	
Col. Temp.	: 40 °C	
Detection	: UV 247 nm	
Injection Vol.	: 10 $\mu$ L	
Sample	: Tolylene diisocyanate	