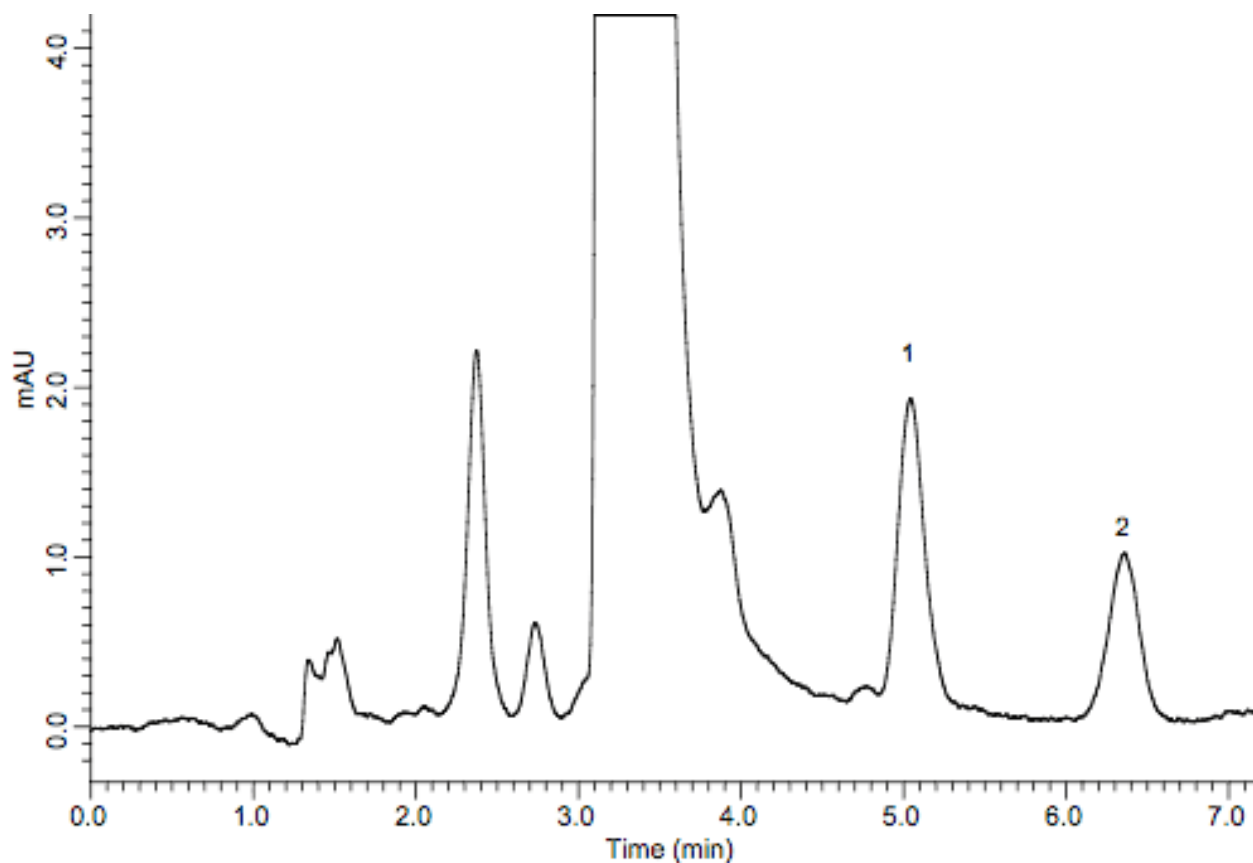


Analysis of Aldehyde derivatized with DNPH

Data No. LA580-0696



System :GL-7400 system

Column :Inertsil ODS-SP (5 μ m, 150 x 4.6 mm I.D.)

Column Cat. No.:

Eluent :A) CH₃CN

B) H₂O

A/B = 55/45, v/v

Flow rate :1.0 mL/min.

Col. Temp. :40 °C

Detection :UV 360 nm (GL-7450 UV Detector)

Injection Vol. :20 μ L

Sample :

Solutes :1) Formaldehyde(Deriv.) 20 μ g/L

2) Acetaldehyde (Deriv.) 20 μ g/L