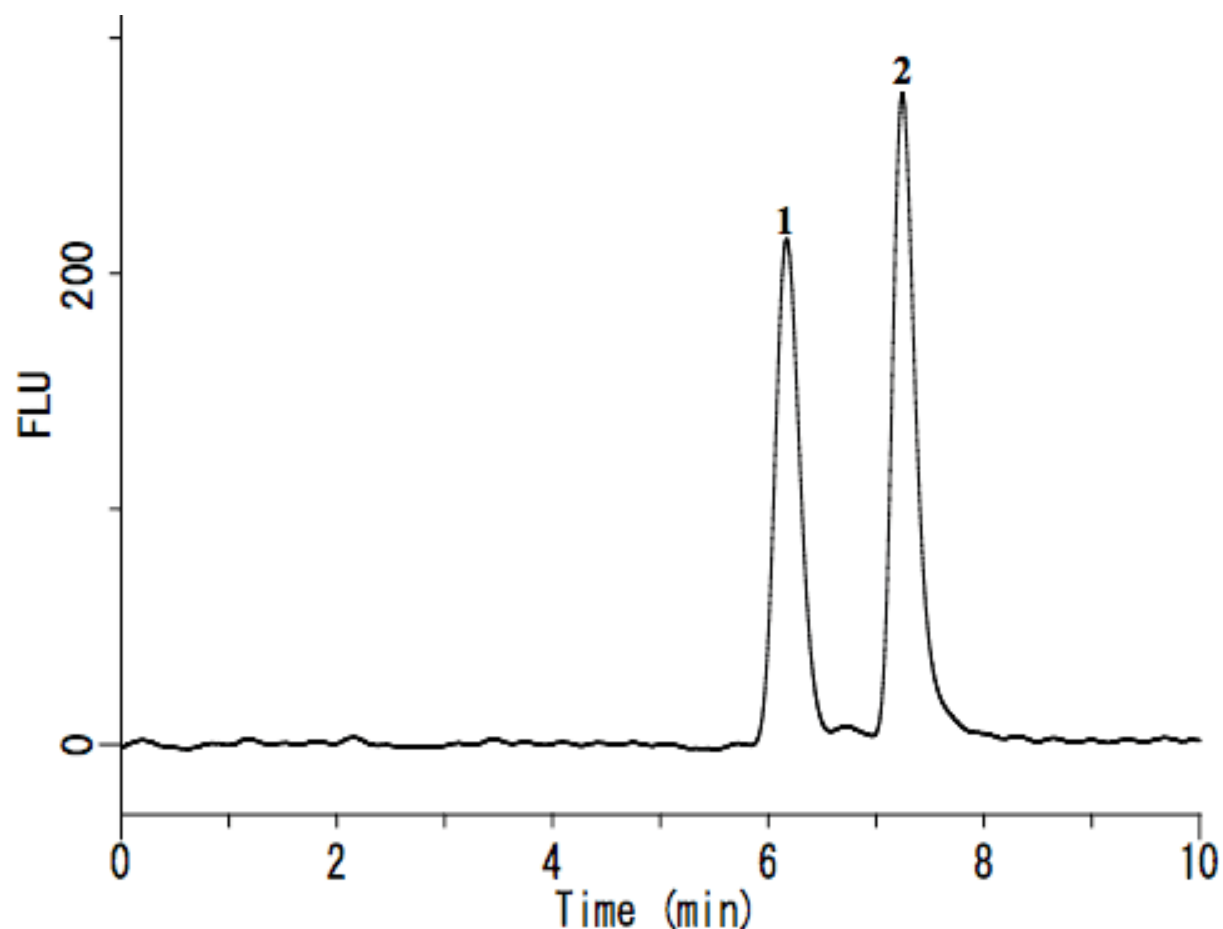


Analysis of Aldehydes (post-column derivatization by 1,3-Cyclohexanedione)

Data No. LA581-0696



System	: GL-7400 system	Solutes	: 1. Formaldehyde (0.5 mg/L)
Column	: Inertsil CX (5 μ m, 250 \times 4.6 mm I.D.)		2. Acetaldehyde (0.5 mg/L)
Column Cat. No. :			(fluorescently-Derivatized)
Eluent	: A) 0.2% H ₃ PO ₄		
	B) CH ₃ CN		
	A/B = 98/2, v/v		
Flow rate	: 0.7 mL/min		
Col. Temp.	: 40 °C		
Detection	: FL Ex 366 nm Em 440 nm (GL-7453A FL detector)		
Injection Vol.	: 100 μ L		
Sample	: Aldehydes derivitized with 1,3-Cyclohexanedione		