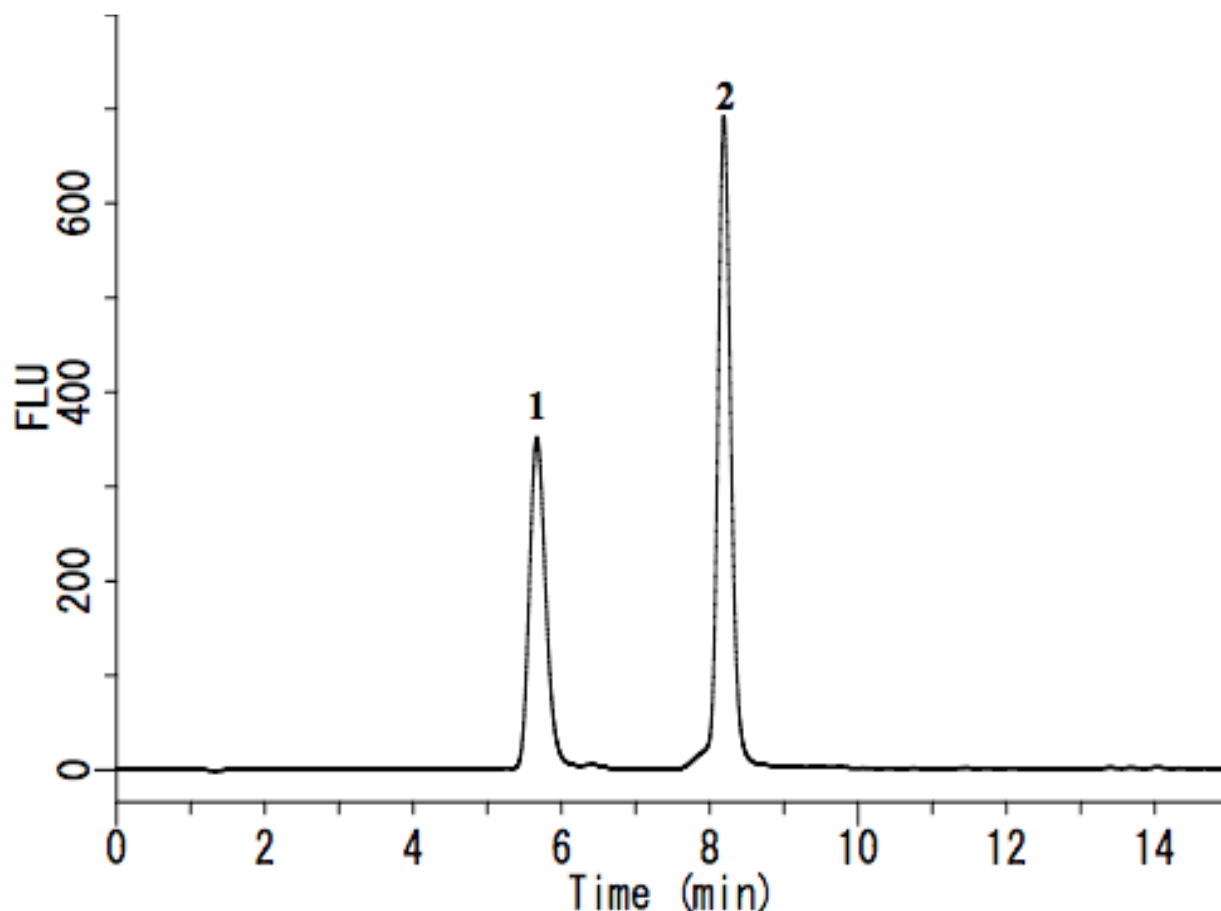


## Analysis of Aldehydes (post-column derivatization by 1,3-Cyclohexanedione)

Data No. LA582-0696



System : GL-7400 system

Column : Inertsil ODS-SP (5  $\mu$ m, 250  $\times$  4.6 mm I.D.)

Column Cat. No. :

Eluent : A) 0.2%  $\text{KH}_2\text{PO}_4$

B)  $\text{CH}_3\text{CN}$

A/B = 98/2, v/v

Flow rate : 0.7 mL/min

Col. Temp. : 40  $^\circ\text{C}$

Detection : FL Ex 366 nm Em 440 nm (GL-7453A FL detector)

Injection Vol. : 100  $\mu\text{L}$

Sample : Aldehydes derivitized with 1,3-Cyclohexanedione

Solutes : 1. Formaldehyde (1mg/L)

2. Acetaldehyde (1mg/L)

( fluorescently-Derivatized )