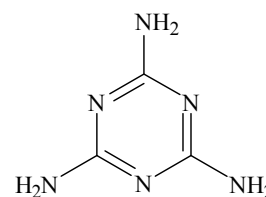
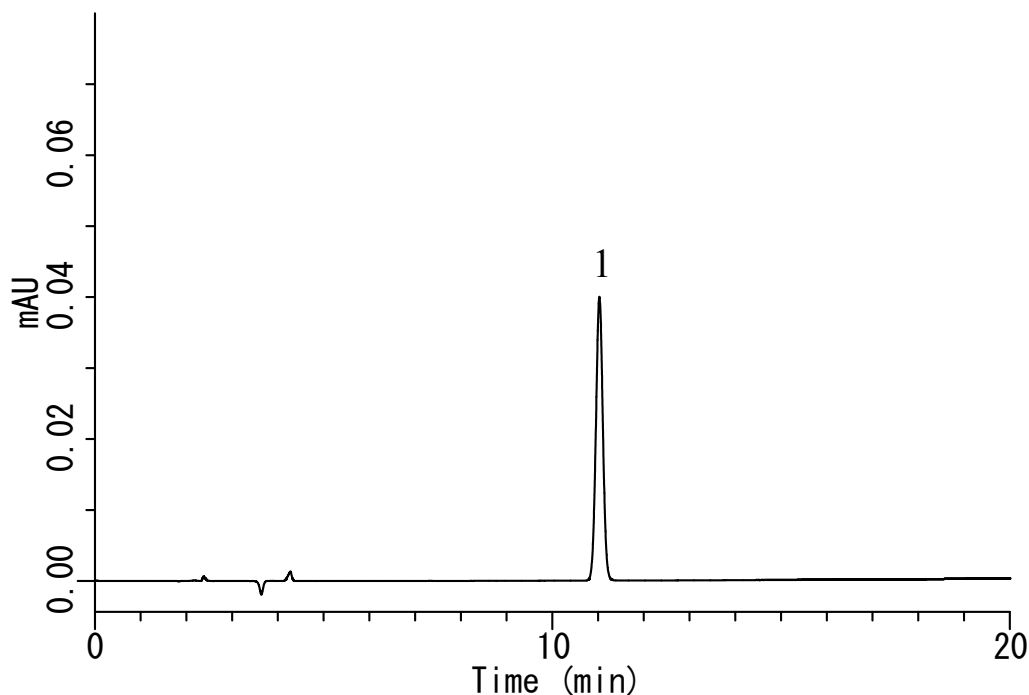


# InertSearch™ for LC

Inertsil® Applications

## Analysis of Melamine

Data No. LA598-0848



1. Melamine

Structures are created using Chemistry 4-D Draw which is provided by ChemInnovation Software, Inc.

### Conditions

**System** : GL-7400 HPLC system  
**Column** : Inertsil ODS-SP (5 µm, 250 x 4.6 mm I.D.)  
**Column Cat. No.** : 5020-02746  
**Eluent** : A) CH<sub>3</sub>CN  
B) 10 mM KH<sub>2</sub>PO<sub>4</sub>, 10 mM IPCC-08 (pH 3.0, H<sub>3</sub>PO<sub>4</sub>)  
(IPCC-08: Sodium 1-Octanesulfonate)  
A/B = 15/85, v/v  
**Flow Rate** : 1.0 mL/min  
**Col. Temp.** : 40 °C  
**Detection** : UV 240 nm (GL-7450 UV Detector)  
**Injection Vol.** : 10 µL  
**Sample** : Melamine

### Analyte:

1. Melamine 20 mg/L