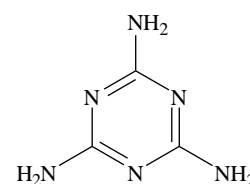
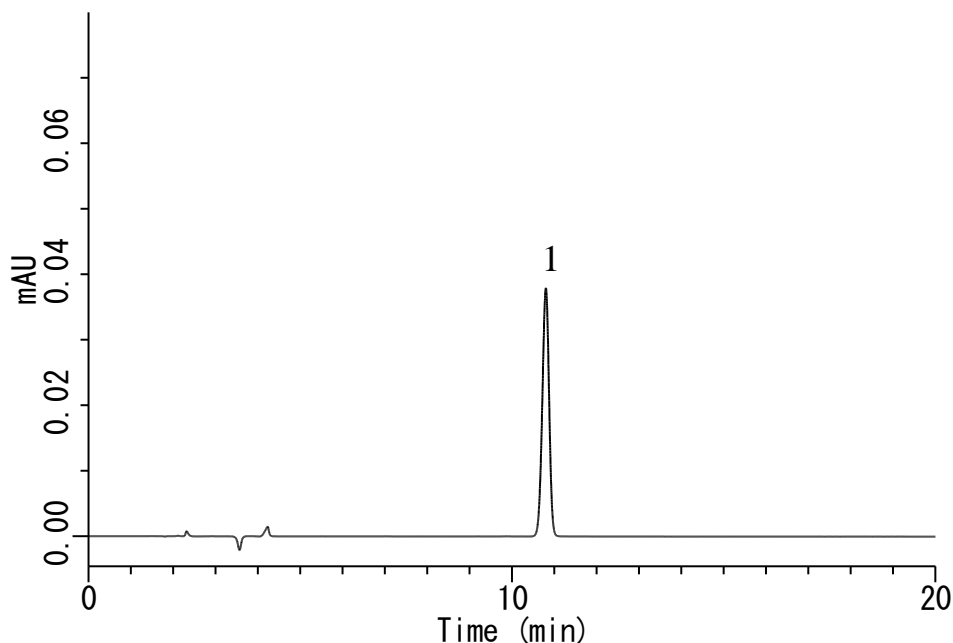


Analysis of Melamine



1. Melamine

Structures are created using Chemistry 4-D Draw which is provided by ChemInnovation Software, Inc.

Conditions

System	: GL-7400 HPLC system
Column	: Inertsil C8-3 (5 μ m, 250 x 4.6 mm I.D)
Column Cat. No.	: 5020-01901
Eluent	: A) CH ₃ CN B) 10 mM KH ₂ PO ₄ , 10 mM IPCC-08 (pH 3.0, H ₃ PO ₄) (IPCC-08: Sodium 1-Octanesulfonate) A/B = 15/85, v/v
Flow Rate	: 1.0 mL/min
Col. Temp.	: 40 °C
Detection	: UV 240 nm (GL-7450 UV Detector)
Injection Vol.	: 10 μ L
Sample	: Melamine

Analyte:

1. Melamine 20 mg/L