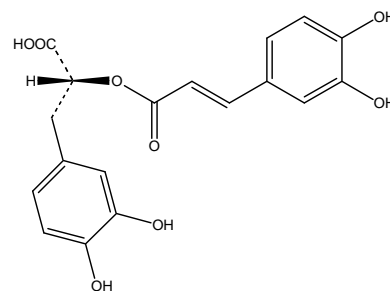
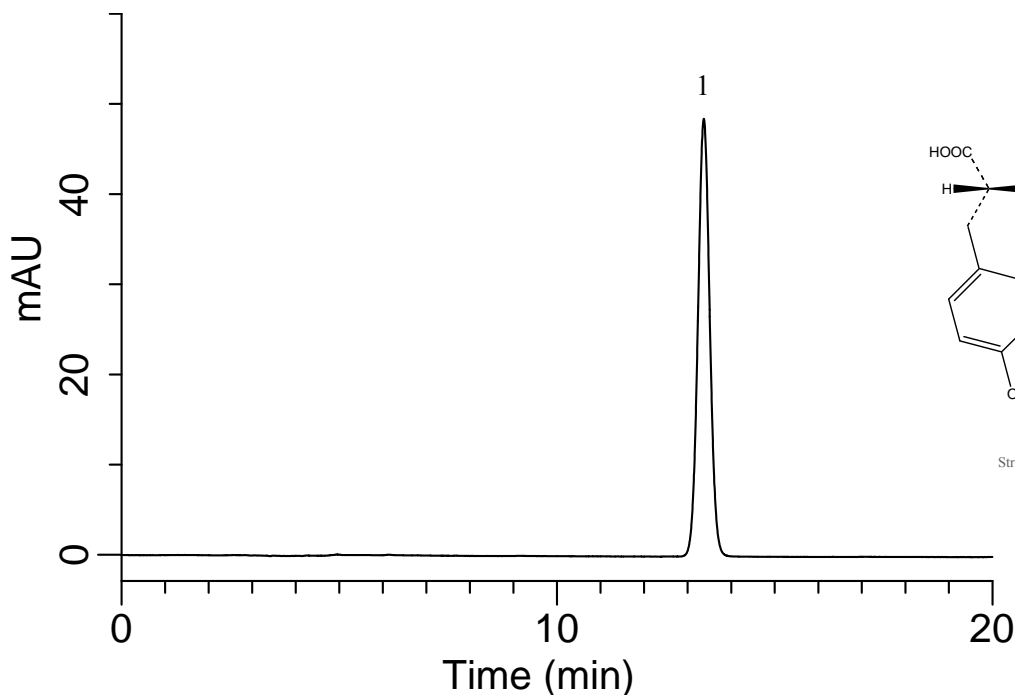


# InertSearch™ for LC

Inertsil® Applications

## Analysis of Rosmarinic acid

Data No. LA613-0521



Structures are created using Chemistry 4-D Draw which is provided by ChemInnovation Software, Inc.

### Conditions

**System** : GL-7400 HPLC system  
**Column** : Inertsil ODS-4 (5 $\mu$ m, 150  $\times$  4.6 mm I.D.)  
**Column Cat. No.** : 5020-03945  
**Eluent** : A) CH<sub>3</sub>CN  
B) 0.1 % H<sub>3</sub>PO<sub>4</sub>  
A/B = 25/75, v/v (Mixed by a gradient mixer)  
**Flow Rate** : 0.5 mL/min  
**Col. Temp.** : 40 °C  
**Detection** : UV 240 nm (GL-7450 UV detector)  
**Injection Vol.** : 2  $\mu$ L

### Analyte:

1.Rosmarinic acid (100 mg/L in 50% CH<sub>3</sub>CN)