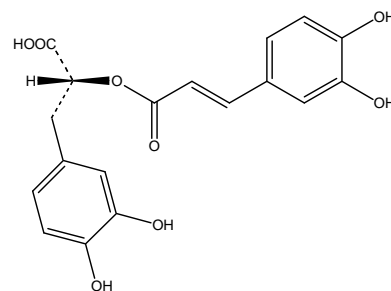
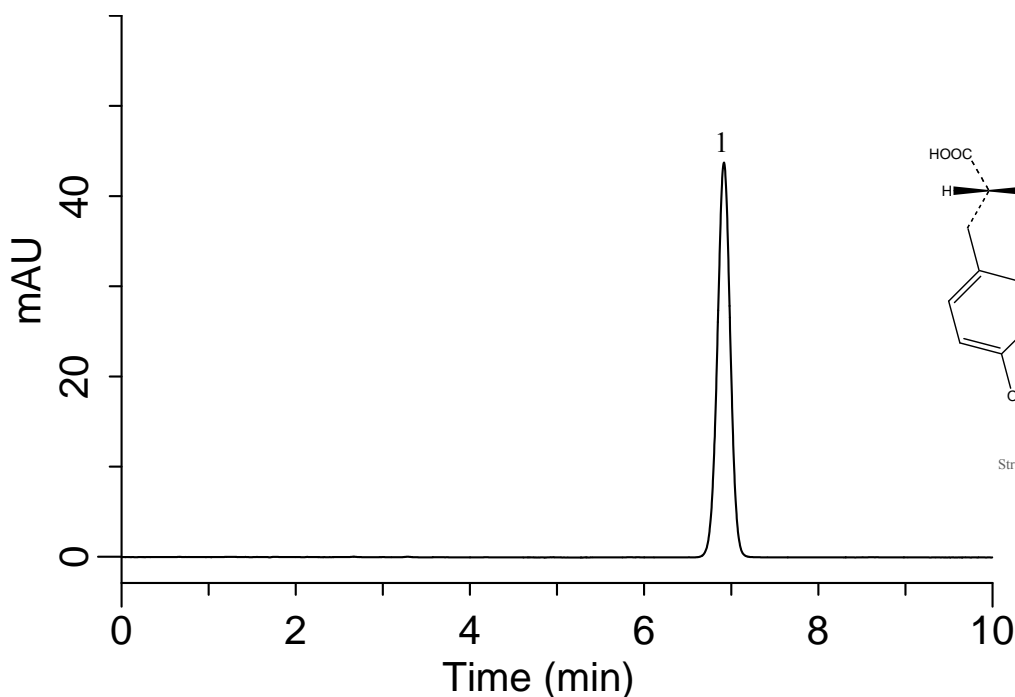


InertSearch™ for LC

Inertsil® Applications

Analysis of Rosmarinic acid

Data No. LA614-0521



1.Rosmarinic acid

Structures are created using Chemistry 4-D Draw which is provided by ChemInnovation Software, Inc.

Conditions

System : GL-7400 HPLC system
Column : Inertsil ODS-4 (5 μ m, 150 \times 4.6 mm I.D.)
Column Cat. No. : 5020-03945
Eluent : A) CH₃CN
B) 0.1 % H₃PO₄
A/B = 25/75, v/v (Mixed by a gradient mixer)
Flow Rate : 1 mL/min
Col. Temp. : 40 °C
Detection : UV 240 nm (GL-7450 UV detector)
Injection Vol. : 2 μ L

Analyte:

1.Rosmarinic acid (100 mg/L in 50% CH₃CN)