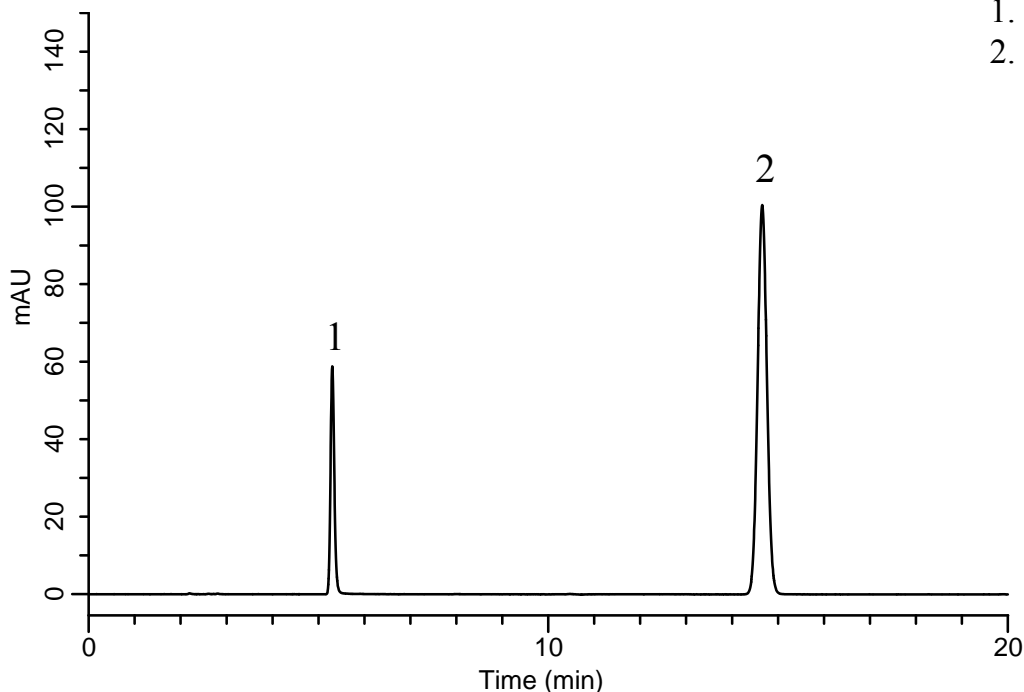


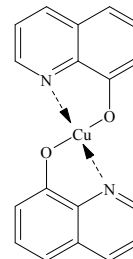
Analysis of Oxine-copper and Caffeine

Data No. LA615-D408

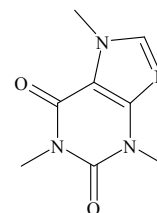


Analyte:

- | | |
|-----------------|----------|
| 1. Oxine-copper | 10 mg/L |
| 2. Caffeine | 400 mg/L |



1. Oxine-copper



2. Caffeine

Conditions

- System** : GL-7400 HPLC system
Column : Inertsil ODS-4 (5 µm, 250 x 4.6 mm I.D)
Column Cat. No. : 5020-03946
Eluent : A) CH₃CN
 : B) 20 mM H₃PO₄ in H₂O
 : A/B = 10/90, v/v
Flow Rate : 1.0 mL/min
Col. Temp. : 40 °C
Detection : UV 254 nm (GL-7450 UV Detector)
Injection Vol. : 2.5 µL
Sample : pesticide

Structures are created using Chemistry 4-D Draw which is provided by ChemInnovation Software, Inc.