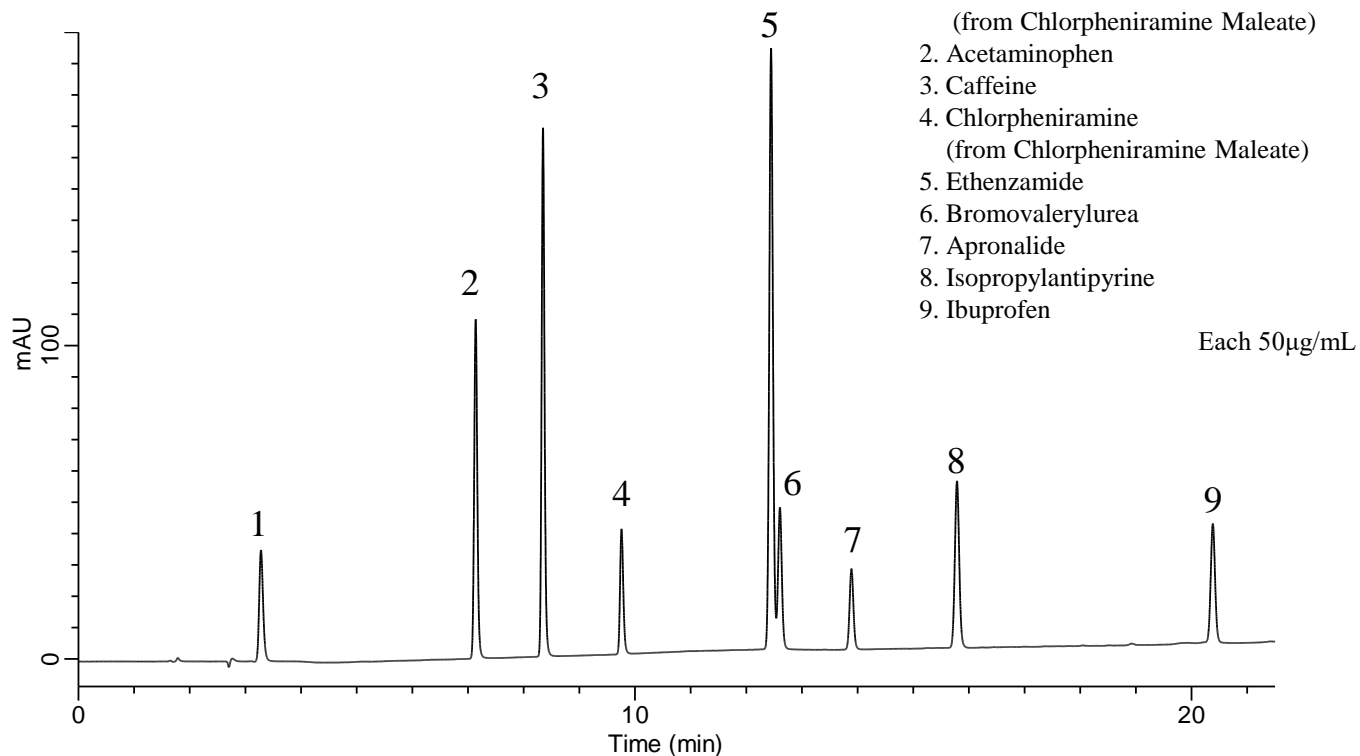


## Analysis of Cold medication

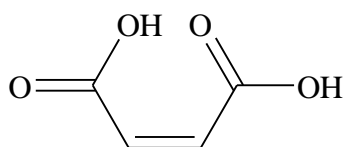

**Analyte :**

1. Maleic acid  
(from Chlorpheniramine Maleate)
2. Acetaminophen
3. Caffeine
4. Chlorpheniramine  
(from Chlorpheniramine Maleate)
5. Ethenzamide
6. Bromovalerylurea
7. Apronalide
8. Isopropylantipyrine
9. Ibuprofen

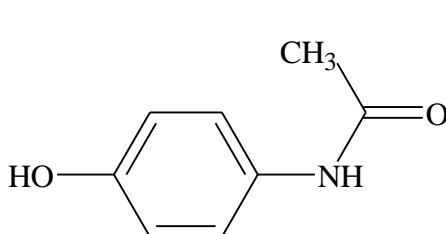
**Conditions**

<b>System</b>	: GL-7400 HPLC system
<b>Column</b>	: Inertsil ODS-4 (5 µm, 150 x 4.6 mm I.D)
<b>Column Cat. No.</b>	: 5020-03945
<b>Eluent</b>	: A) CH <sub>3</sub> CN B) 0.1% H <sub>3</sub> PO <sub>4</sub> in H <sub>2</sub> O A/B = 3/97 -20 min- 75/25, v/v (Mixed by a gradient mixer)
<b>Flow Rate</b>	: 1.0 mL/min
<b>Col. Temp.</b>	: 40 °C
<b>Detection</b>	: UV 210 nm (GL-7452A PDA Detector)
<b>Injection Vol.</b>	: 10 µL
<b>Sample</b>	: cold medication

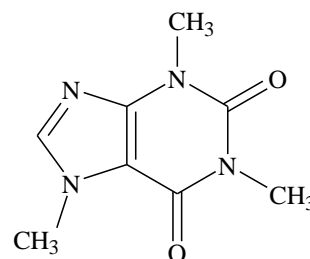
## Analysis of Cold medication



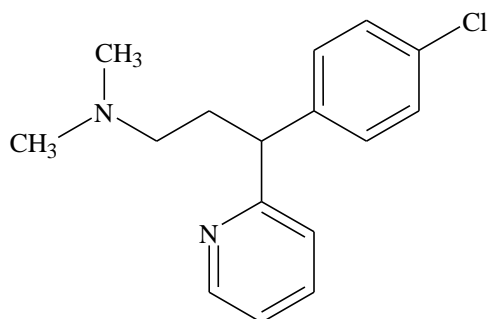
1. Maleic acid



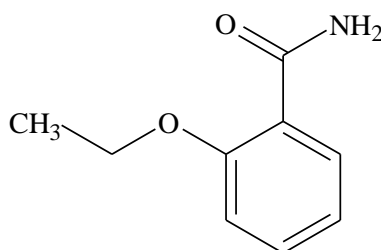
2. Acetaminophen



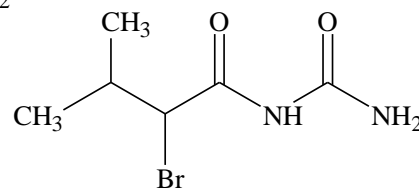
3. Caffeine



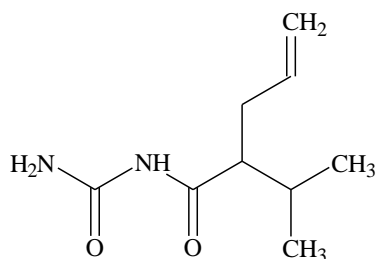
4. Chlorpheniramine



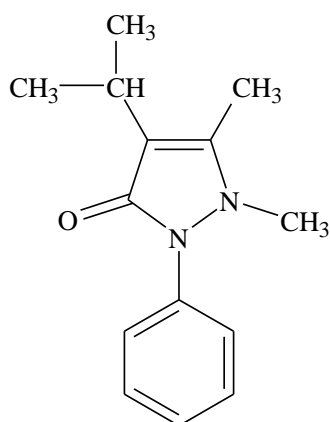
5. Ethenzamide



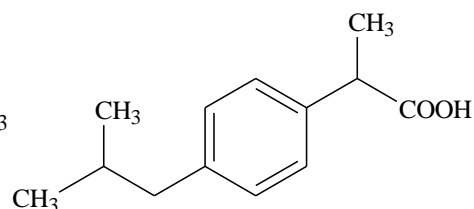
6. Bromovalerylurea



7. Apronalide



8. Isopropylantipyrine



9. Ibuprofen