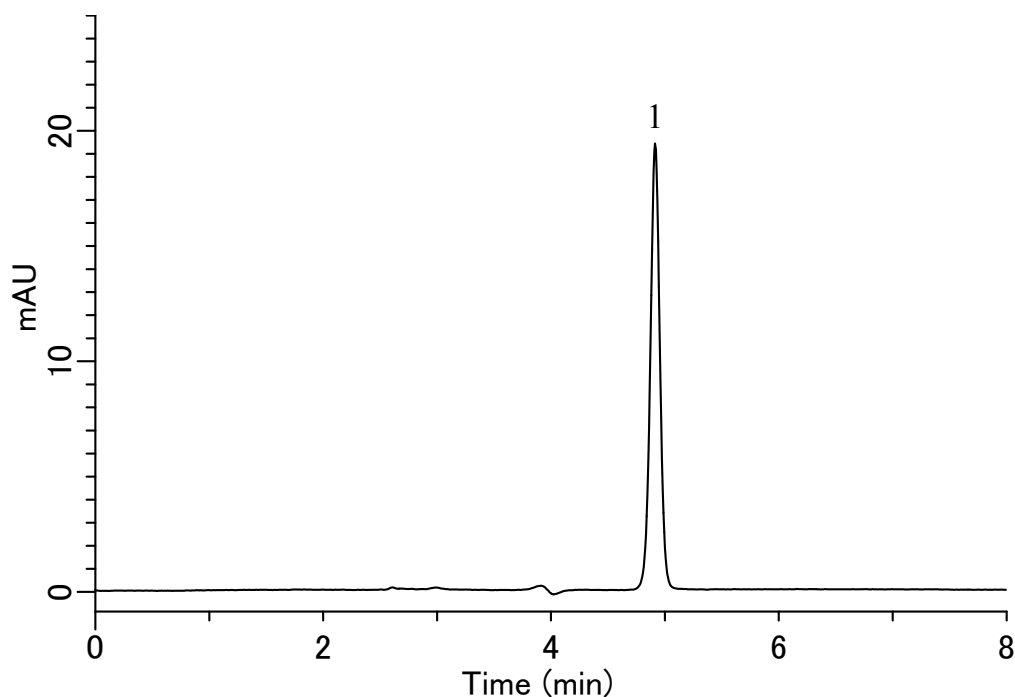


InertSearch™ for LC

Inertsil® Applications

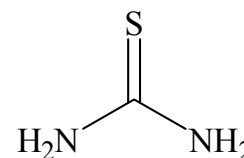
Analysis of thiourea

Data No. LA619-0696



Analyte :

1. Thiourea 1 mg/L



Structures are created using Chemistry 4-D Draw which is provided by ChemInnovation Software, Inc.

Conditions

System : GL-7400 HPLC system
Column : Inertsil HILIC (5 µm, 250 x 4.6 mm I.D)
Column Cat. No. : 5020-07736
Eluent : A) CH₃CN
B) H₂O
A/B = 95/5, v/v
(Mixed by a gradient mixer)
Flow Rate : 1.0 mL/min
Col. Temp. : 40 °C
Detection : UV 245 nm (GL-7450 UV Detector)
Injection Vol. : 10 µL
Sample : thiourea