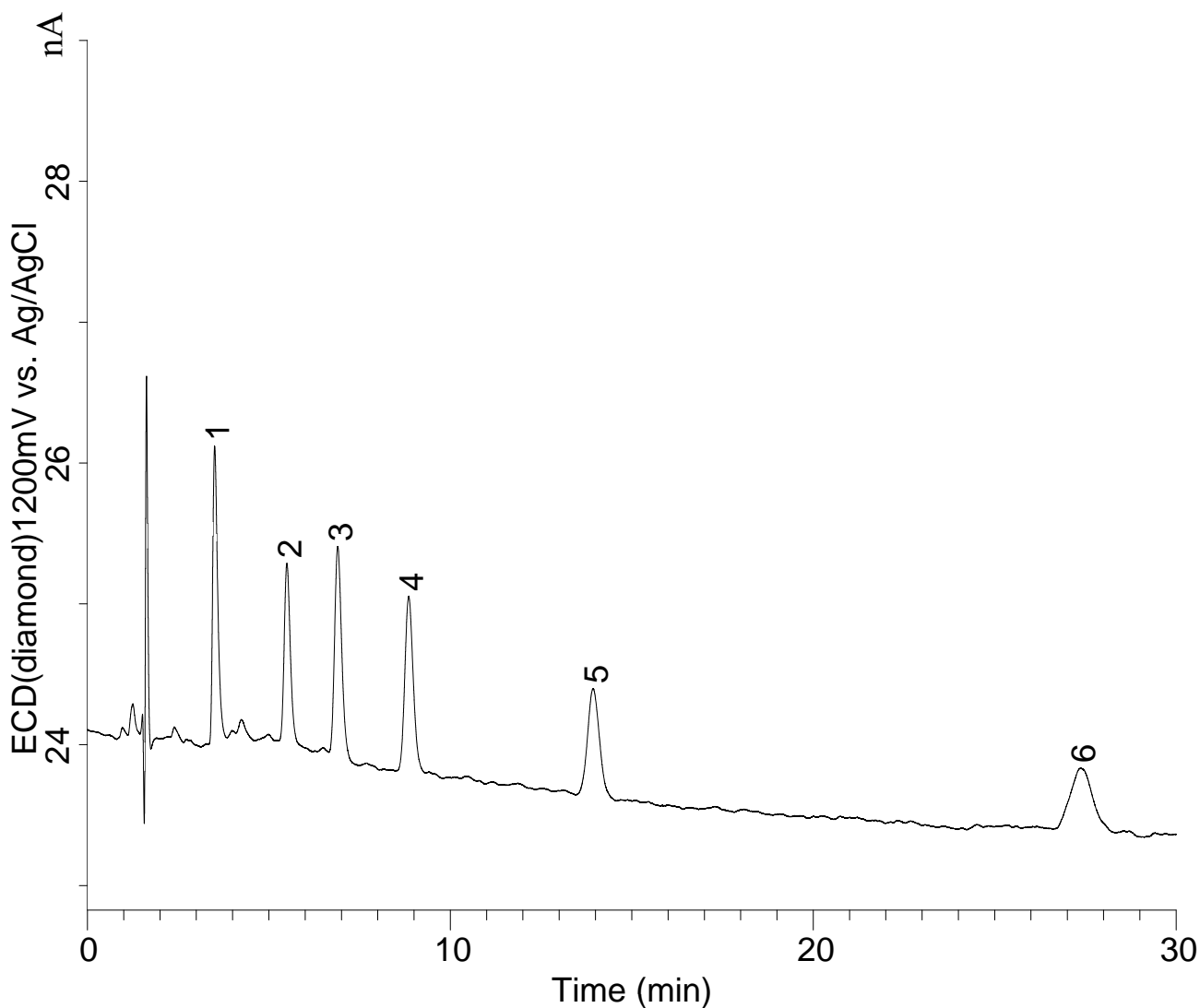


InertSearch™ for LC

Inertsil® Applications

Analysis of phenol and Chlorophenols by HPLC-ECD

Data No. LA627-0774



Conditions

System : GL-7400 HPLC system
Column : Inertsil ODS-3 (5 μ m, 150 x 4.6 mm I.D.)
Column Cat. No. : 5020-01731
Eluent : A) CH₃OH
 B) H₂O
 C) H₃PO₄
 A/B/C = 55/44.9/0.1, w/w/w
Flow rate : 1.0 mL/min
Col. Temp. : 35 °C
Detection : ECD 1200 mV vs Ag/AgCl
 (ED703 EC Detector, Diamond)
Injection Vol. : 10 μ L
Analyte : phenol and Chlorophenols

Analyte:

1. Phenol	(10 ng/mL)
2. 2-Chlorophenol	(10 ng/mL)
3. 4-Chlorophenol	(10 ng/mL)
4. 2,6-Dichlorophenol	(10 ng/mL)
5. 2,4-Dichlorophenol	(10 ng/mL)
6. 2,4,6-Trichlorophenol	(10 ng/mL)