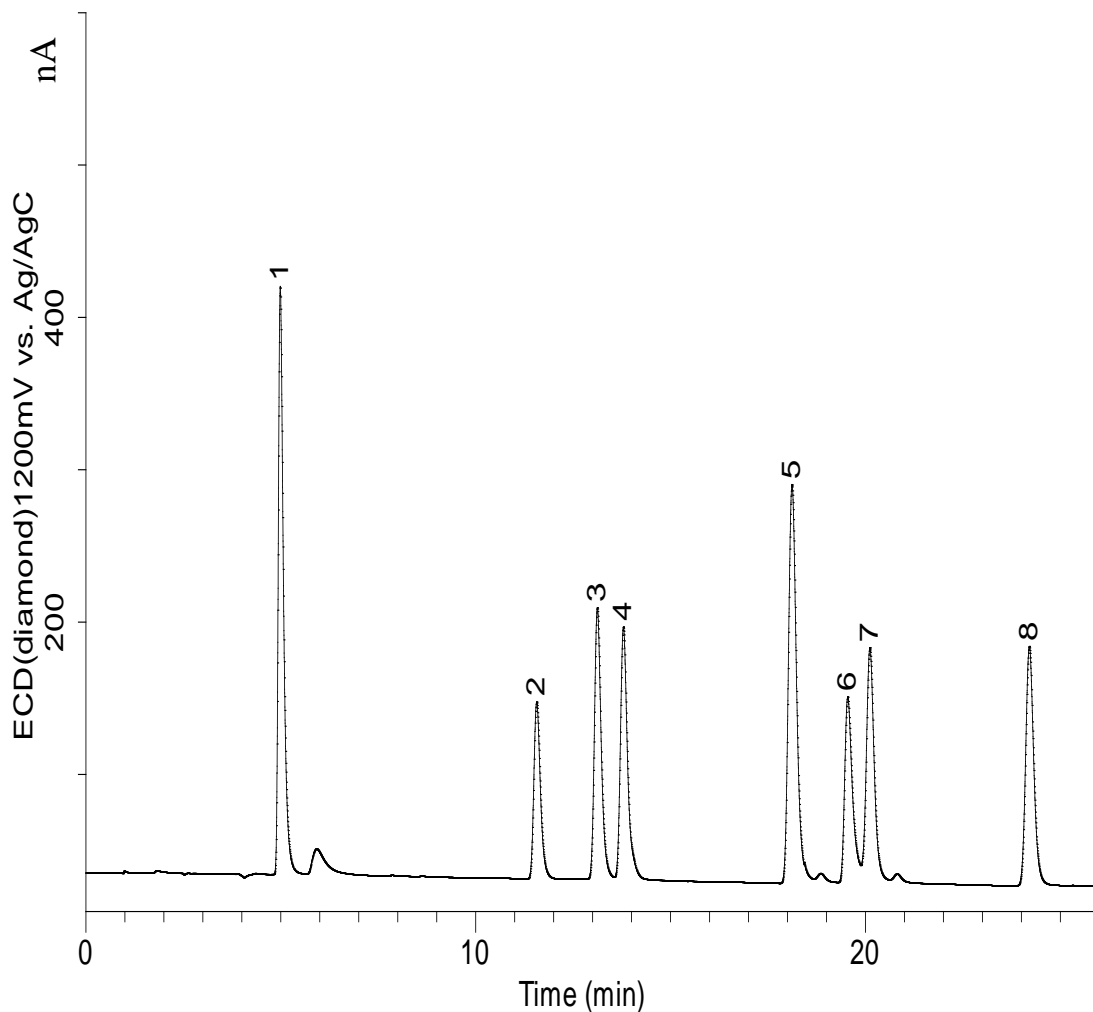


## Analysis of Phenolic Acid by HPLC-ECD



### Conditions

**System** : GL-7400 HPLC system  
**Column** : Inertsil ODS-3 (5 $\mu$ m, 250 x 4.6 mm I.D.)  
**Column Cat. No.** : 5020-01732  
**Eluent** : A) 0.1% H<sub>3</sub>PO<sub>4</sub> in CH<sub>3</sub>CN  
 B) 0.1% H<sub>3</sub>PO<sub>4</sub> in H<sub>2</sub>O  
 A/B = 10/90 - 40min - 40/60, w/w  
 (Mixed by a gradient mixer)  
**Flow rate** : 1.0 mL/min  
**Col. Temp.** : 35 °C  
**Detection** : ECD 1200 mV vs Ag/AgCl  
 (ED703 EC Detector, Diamond)  
**Injection Vol.** : 10  $\mu$ L  
**Analyte** : Phenolic acid

### Analyte:

1. Gallic acid	(1.0 mg/L)
2. 4-Hydroxybenzoic acid	(1.0 mg/L)
3. Caffeic acid	(1.0 mg/L)
4. Syringic acid	(1.0 mg/L)
5. <i>p</i> -Coumaric acid	(1.0 mg/L)
6. Ferulic acid	(1.0 mg/L)
7. <i>o</i> -Coumaric acid	(1.0 mg/L)
8. Ellagic acid	(1.0 mg/L)