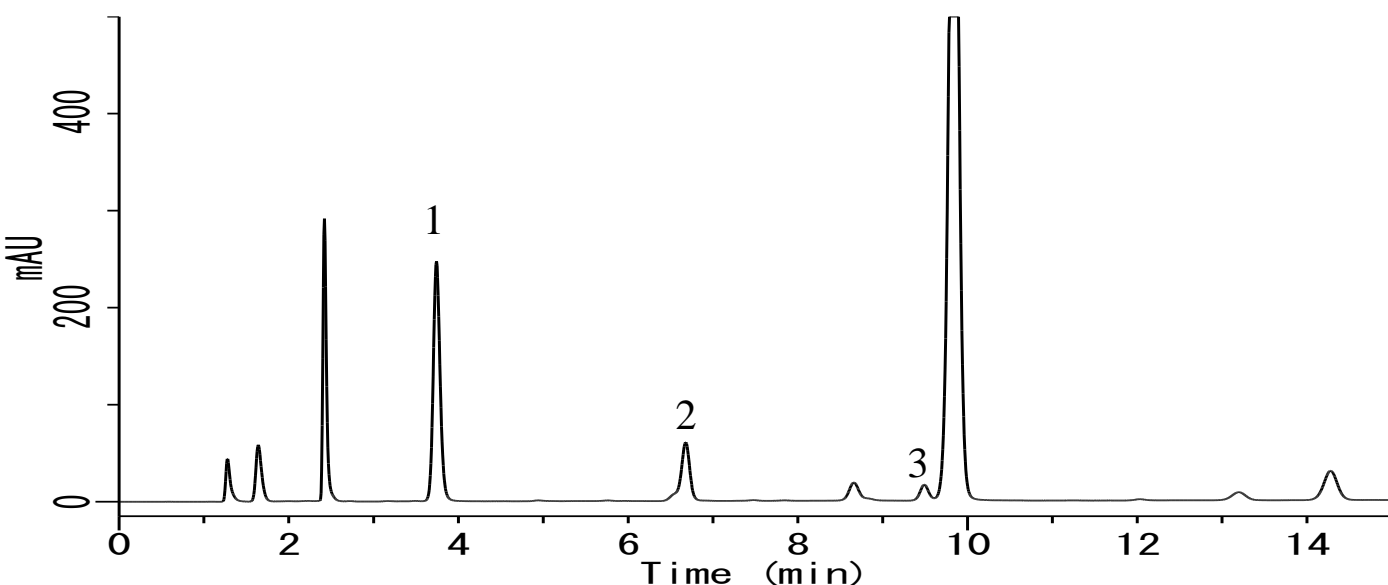


## Analysis of Vitamin B in energy drink



### Conditions

**System** : GL-7400 HPLC system  
**Column** : Inertsil ODS-3 (5 $\mu$ m, 150 x 4.6 mm I.D.)  
**Column Cat. No.** : 5020-01731  
**Eluent** : A) CH<sub>3</sub>CN  
           B) 0.2 % H<sub>3</sub>PO<sub>4</sub>, 5 mM IPCC-06  
           (IPCC-06: Sodium 1 - Hexanesulfonate)  
           A/B = 5/95 -15min- 20/80, v/v  
**Flow rate** : 1.0 mL/min  
**Col. Temp.** : 40 °C  
**Detection** : UV 210 nm (GL-7450 UV Detector)  
**Injection Vol.** : 20  $\mu$ L  
**Sample** : Vitamin B

### Analyte:

1. Nicotinamide
2. Pyridoxine
3. Thiamine