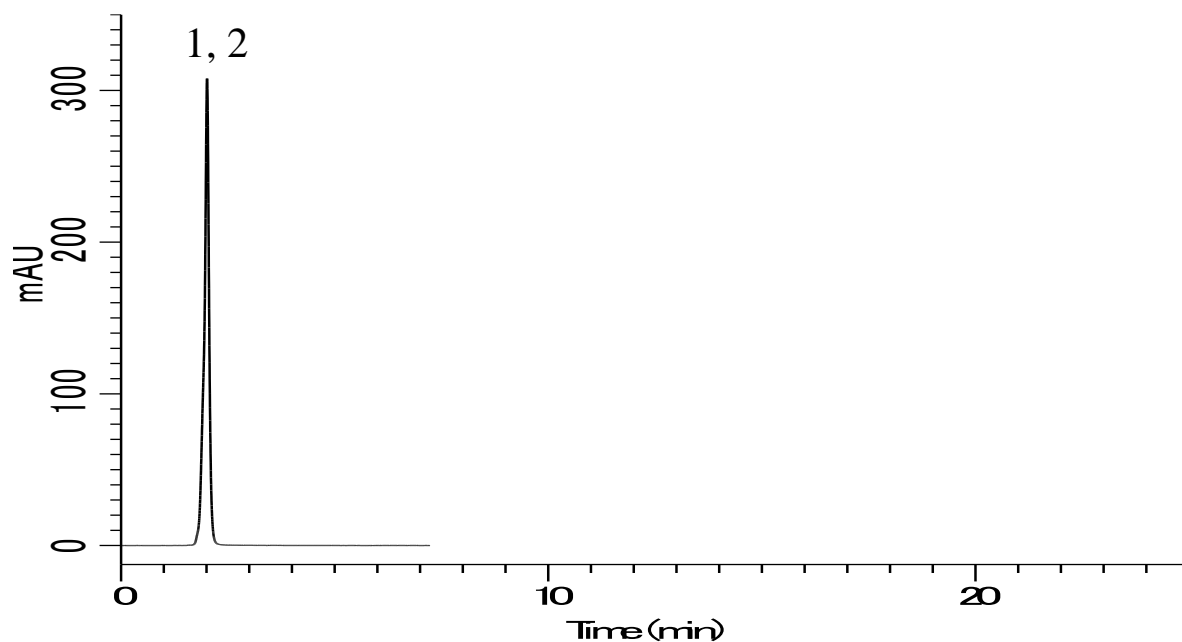


## Analysis of Vitamin A (Inertsil CN-3)



### Conditions

**System** : GL-7400 HPLC system  
**Column** : Inertsil CN-3 (5 $\mu$ m, 150 x 4.6 mm I.D.)  
**Column Cat. No.** : 5020-01940  
**Eluent** : A) CH<sub>3</sub>CN  
           B) H<sub>2</sub>O  
           A/B = 75/25, v/v  
**Flow rate** : 1.0 mL/min  
**Col. Temp.** : 40 °C  
**Detection** : UV 325 nm (GL-7450 UV Detector)  
**Injection Vol.** : 10  $\mu$ L  
**Sample** : Vitamin A

### Analyte:

1. 9-cis retinol (10 mg/L)  
 2. all-trans retinol (10 mg/L)