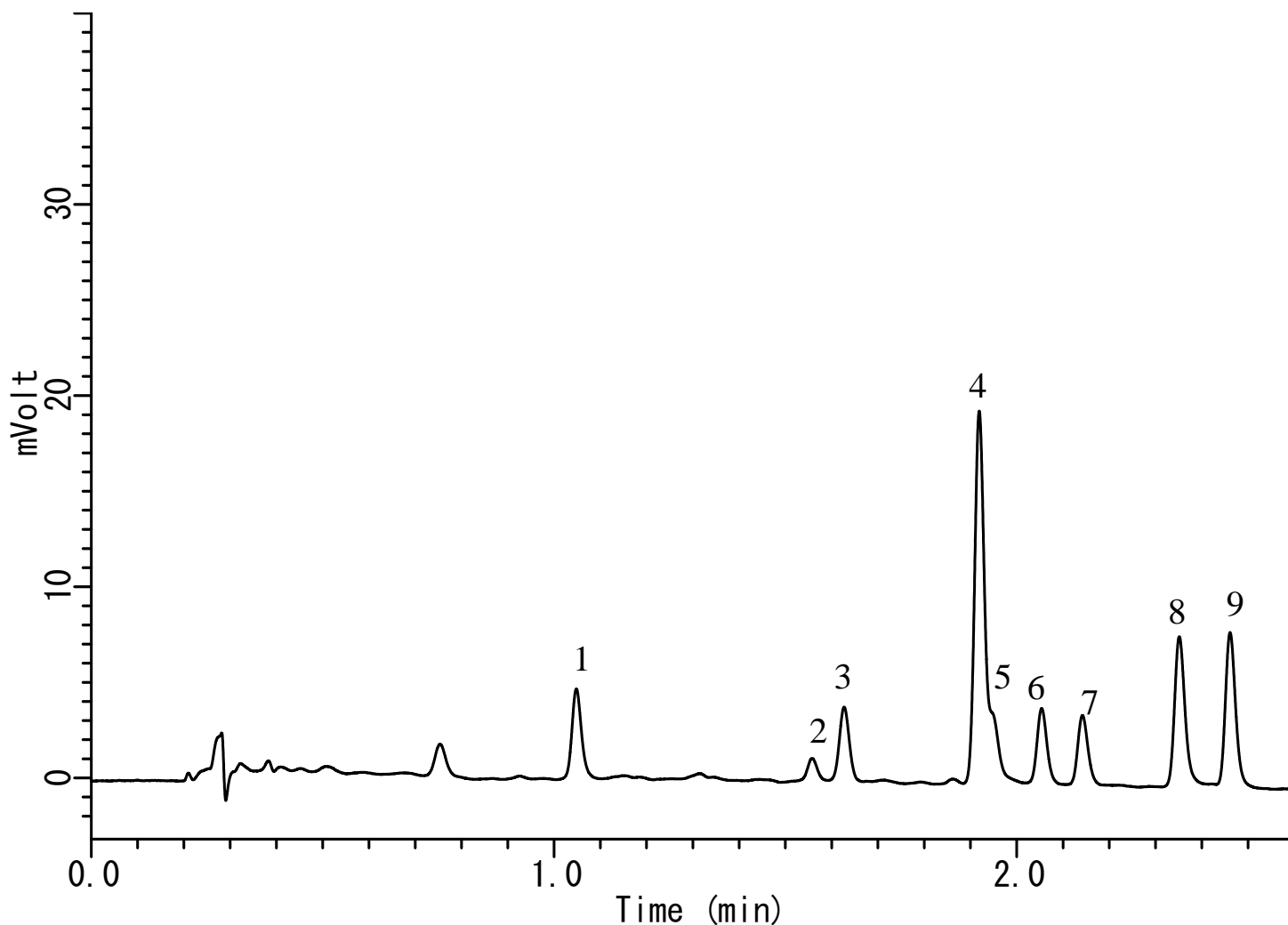


# InertSearch™ for LC

Inertsil® Applications

## Analysis of 9 catechins

Data No. LA660-0735



### Conditions

**System** : LC800 HPLC system  
**Column** : Inertsil ODS-3 (2  $\mu$  m, 50 x 2.1 mm I.D.)  
**Column Cat. No.** : 5020-84652  
**Eluent** : A) CH<sub>3</sub>OH  
B) 10mM NaH<sub>2</sub>PO<sub>4</sub>  
A/B = 10/90 – 2 min – 50/50 – 0.1min  
– 10/90 – 3.9min – 10/90, v/v  
**Flow rate** : 0.5 mL/min  
**Col. Temp.** : 40 °C  
**Detection** : UV 280 nm (5 mm path length, UV Detector)  
**Injection Vol.** : 5  $\mu$  L  
**Analyte** : catechins

### Analyte:

- |    |                          |             |
|----|--------------------------|-------------|
| 1. | Gallocatechin            | ( 20 mg/L)  |
| 2. | Epigallocatechin         | ( 20 mg/L)  |
| 3. | Catechin                 | ( 2.0 mg/L) |
| 4. | Caffeine                 | ( 2.0 mg/L) |
| 5. | Epigallocatechin gallate | ( 2.0 mg/L) |
| 6. | Epicatechin              | ( 2.0 mg/L) |
| 7. | Gallocatechin gallate    | ( 2.0 mg/L) |
| 8. | Epicatechin gallate      | ( 2.0 mg/L) |
| 9. | Catechin Gallate         | ( 2.0 mg/L) |