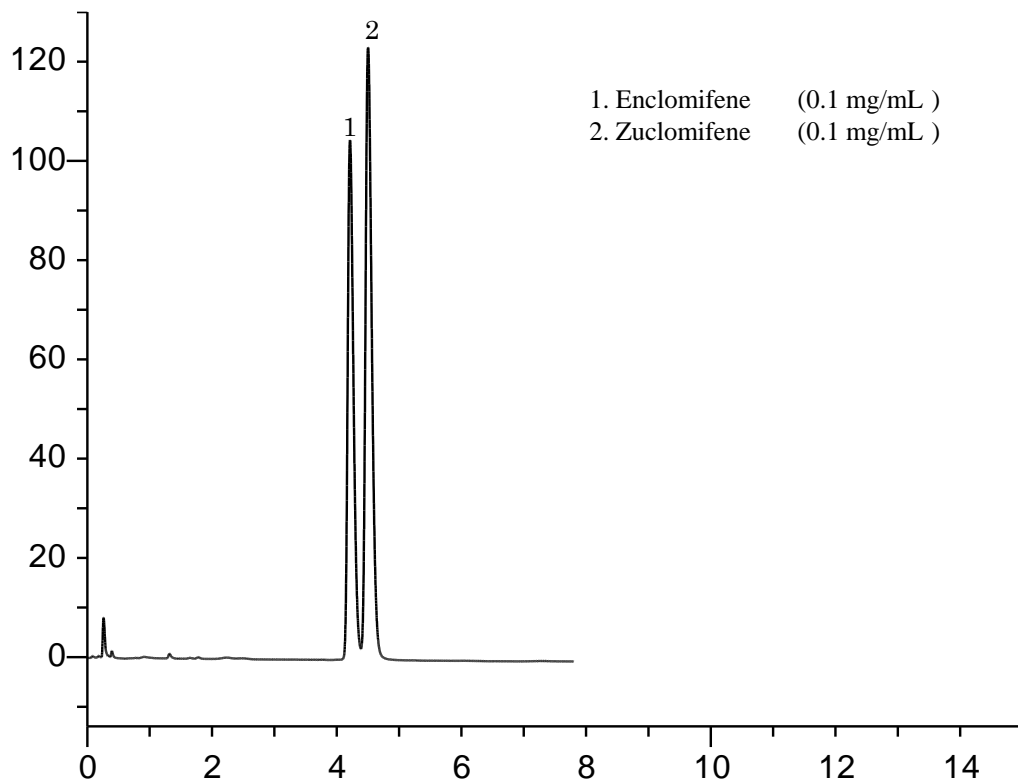
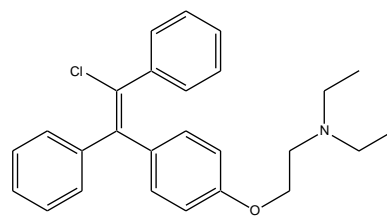


## Analysis of Clomifene (2)

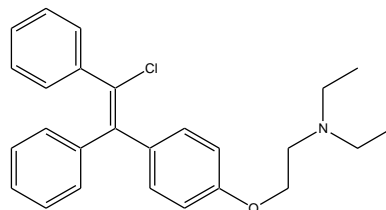


### Conditions

**System** : LC800 HPLC system  
**Column** : Inertsil ODS-3 (2 μm, 75 x 2.1 mm I.D.)  
**Column Cat. No.** : 5020-84653  
**Eluent** : A) CH<sub>3</sub>CN  
 B) 1 % Diethyl amine in H<sub>2</sub>O (pH 6.2, H<sub>3</sub>PO<sub>4</sub>)  
 A/B = 50/50, v/v  
**Flow Rate** : 0.6 mL/min  
**Col. Temp.** : 40 °C  
**Detection** : UV 233 nm (LC800 UV Detector)  
**Injection Vol.** : 5 μL  
**Sample** : Clomifene citrate



1. Enclomifene



2. Zuclomifene