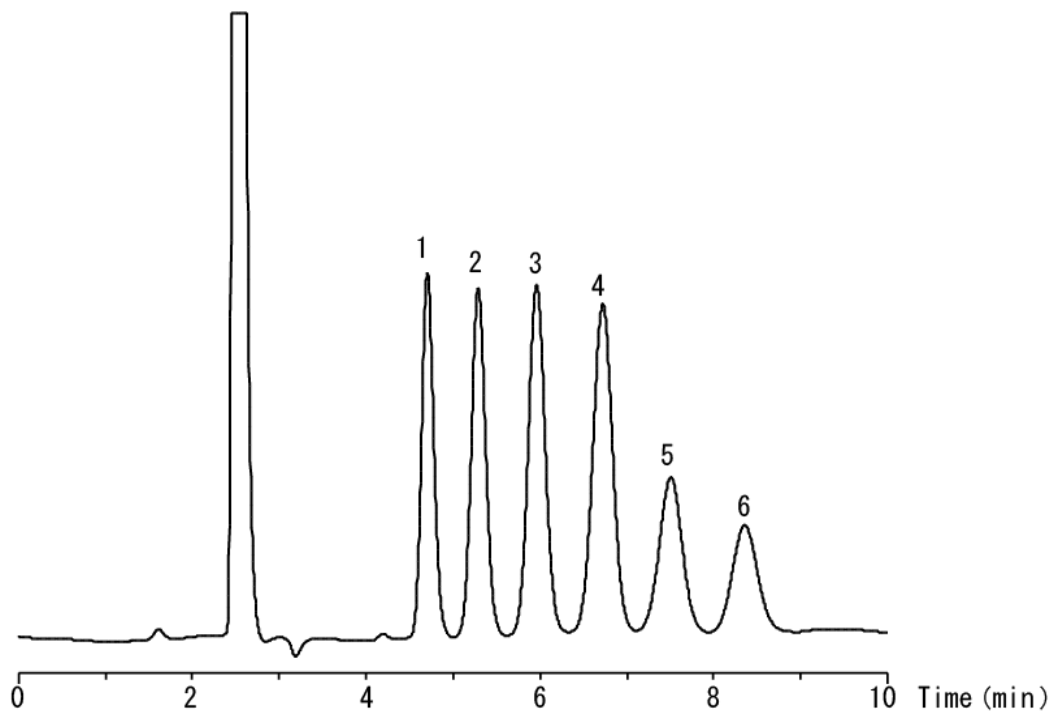


InertSearch™ for LC

Inertsil® Applications

Analysis of Maltooligosaccharide

Data No. LA674-0000



Conditions

Column : Inertsil Diol (5 μ m, 250 x 4.6 mm I.D.)

Column Cat. No. : 5020-05646

Eluent : A) CH₃CN
B) H₂O
A/B = 65/35, v/v

Flow Rate : 1.0 mL/min

Col. Temp. : 40 °C

Detection : RI

Analyte: 1. Maltose
2. Maltotriose
3. Maltotetraose
4. Maltopentaose
5. Maltohexaose
6. Maltoheptaose