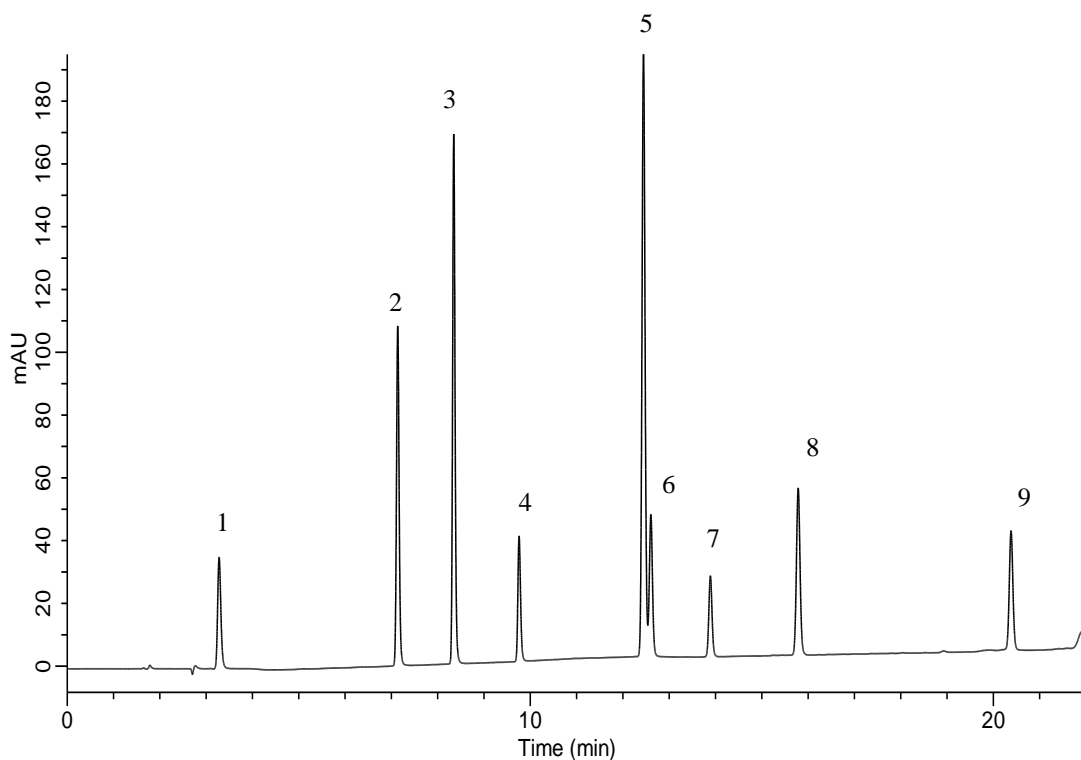


## Analysis of Cold medication



### Conditions

**System** : GL-7400 HPLC System  
**Column** : Inertsil ODS-4 (5  $\mu$ m, 150 x 4.6 mm I.D.)  
**Column Cat. No.** : 5020-03945  
**Eluent** : A) CH<sub>3</sub>CN  
           B) 0.1 % H<sub>3</sub>PO<sub>4</sub> in H<sub>2</sub>O  
           A/B = 3/97 – 20 min – 75/25, v/v  
**Flow Rate** : 1.0 mL/min  
**Col. Temp.** : 40 °C  
**Detection** : UV 210 nm (GL-7450 UV Detector)  
**Injection Vol.** : 10  $\mu$ L

### Analyte

1. Maleic acid	(50 mg/L)
2. Acetaminophen	(50 mg/L)
3. Caffein	(50 mg/L)
4. Chlorpheniramine	(50 mg/L)
5. Ethenzamide	(50 mg/L)
6. Bromovalerylurea	(50 mg/L)
7. Apronalide	(50 mg/L)
8. Isopropylantipyrine	(50 mg/L)
9. Ibuprofen	(50 mg/L)