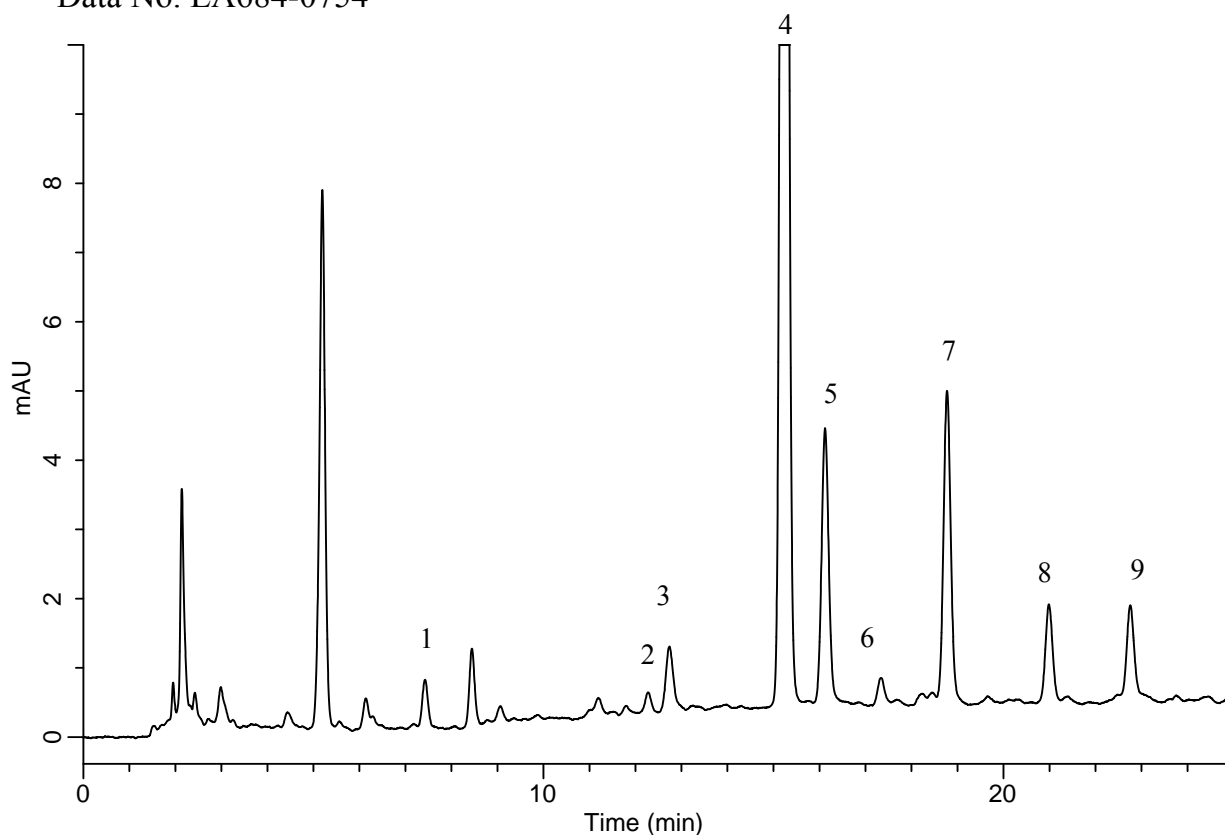


Analysis of Catechins in a tea

Data No. LA684-0754



Conditions

System : GL-7400 HPLC System
Column : Inertsil ODS-3 (4 µm, 150 x 4.6 mm I.D.)
Column Cat. No. : 5020-04645
Eluent : A) CH₃OH
B) 10 mM NaH₂PO₄
A/B = 10/90 – 30 min – 50/50. v/v
Flow Rate : 1.0 mL/min
Col. Temp. : 40 °C
Detection : UV 280 nm (GL-7450 UV Detector)
Injection Vol. : 10 µL

Analyte

1. Gallo catechin (GC)
2. Epigallo catechin (EGC)
3. Catechin (C)
4. Caffeine
5. Epigallo catechingallate (EGCg)
6. Epicatechin (EC)
7. Gallo catechingallate (GCg)
8. Epicatechingallate (ECg)
9. Catechingallate (Cg)