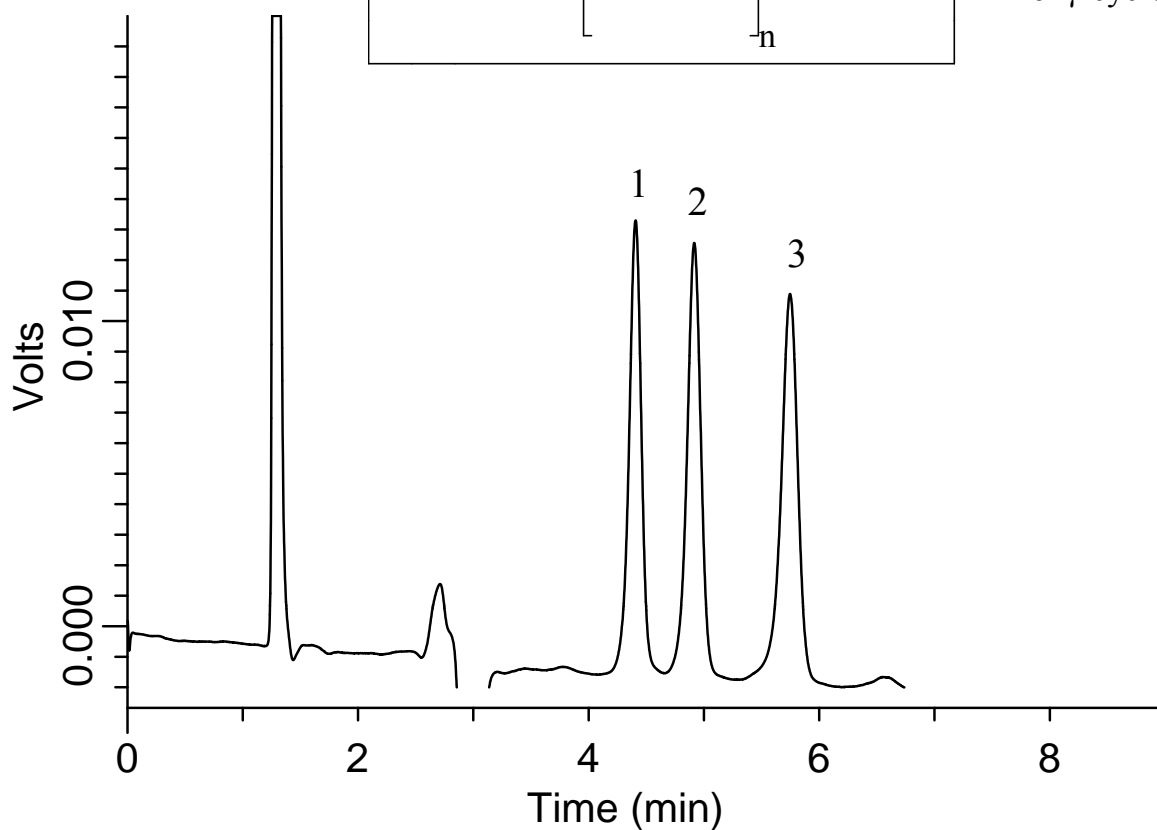
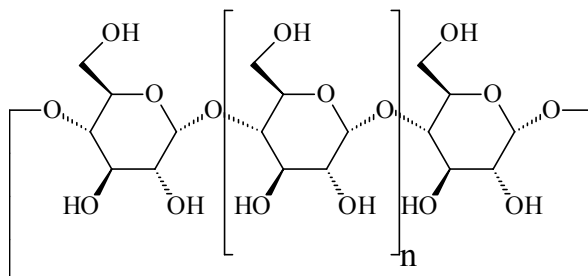


## Analysis of Cyclodextrin

Data No. LA691-0000



### Conditions

**Column** : Inertsil WP300 C18 (5  $\mu$ m, 150 x 4.6 mm I.D.)  
**Column Cat. No.** : 5020-05845  
**Eluent** : A) CH<sub>3</sub>CN  
          : B) 25 mM phosphate buffer (pH 3)  
          : A/B = 60/40, v/v

**Flow Rate** : 1.0 mL/min  
**Col. Temp.** : 40 °C  
**Detection** : RI  
**Injection Vol.** : 20  $\mu$ L

### Analyte

1:  $\alpha$ -Cyclodextrin  
2:  $\beta$ -Cyclodextrin  
3:  $\gamma$ -Cyclodextrin