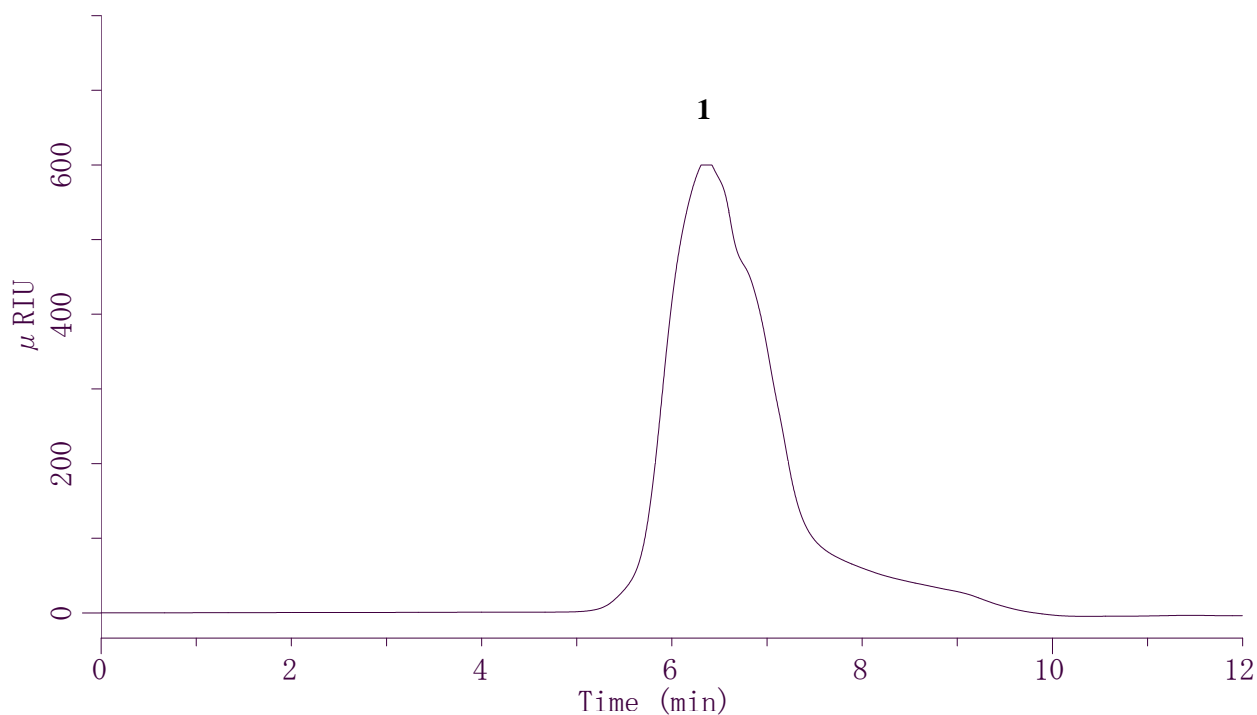


InertSearch™ for LC

Inertsil® Applications

Analysis of Nonionic surfactant

Data No. LA700-0734



Conditions

System : GL7400 HPLC system
Column : Inertsil Diol (5μm, 250 x 7.6 mmI.D.)
Column Cat. No. : 5020-05666
Eluent : THF
Flow Rate : 1.0 mL/min
Col. Temp. : 40°C
Detection : RI (GL-7454 RI Detector) (Cell Temp. 35°C)
Injection Vol. : 50μL

Analyte

1. Polyoxyethylene(23)Lauryl Ether (Brij-35)