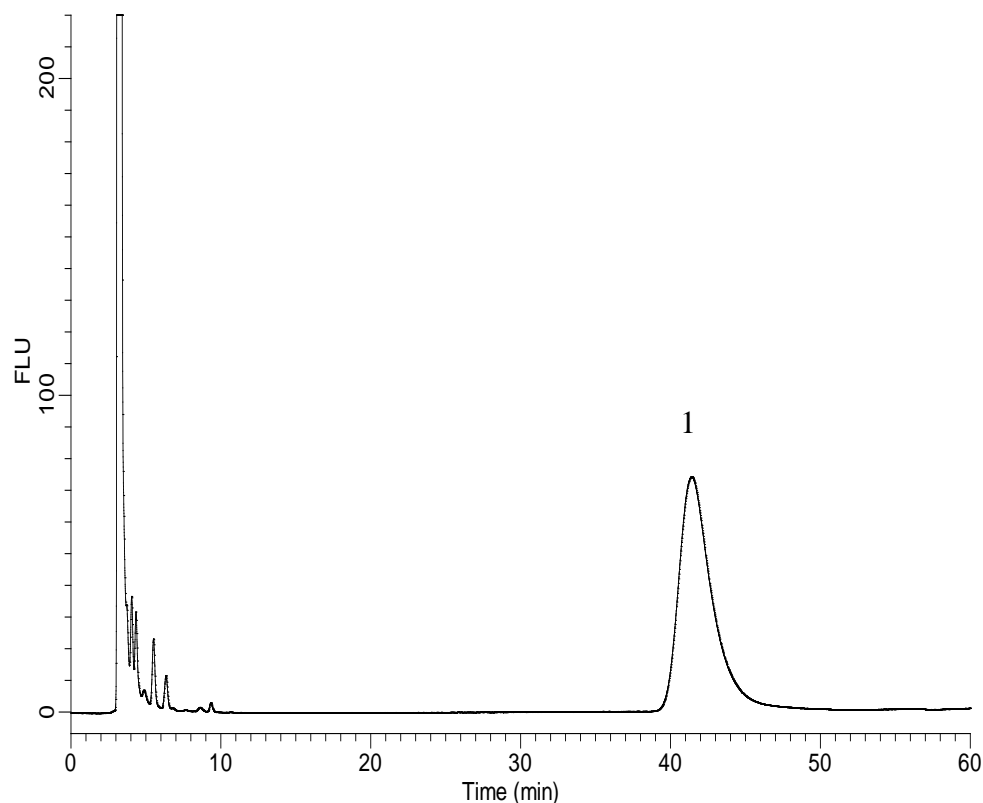


## Analysis of Fmoc-glyphosate



### Conditions

**System** : GL-7400 system  
**Column** : Partisil-10 SAX (10 $\mu$ m, 250 x 4.6 mm I.D.)  
**Column Cat. No.** : 5030-03352  
**Eluent** : A) 20mM KH<sub>2</sub>PO<sub>4</sub> (pH2.5; H<sub>2</sub>PO<sub>4</sub>)  
           B) CH<sub>3</sub>OH  
           A/B = 40 /60, v/v  
**Reaction Reagent** : 9-Fluorenylmethyl Chloroformate (Fmoc)  
                          (Precolumn Derivatization )  
**Flow rate** : 1.0 mL/min  
**Col. Temp.** : 40 °C  
**Detection** : FL Ex 254nm Em 315nm (GL-7453A FL detector)  
**Injection Vol.** : 10  $\mu$ L

### Analyte

1. glyphosate (100  $\mu$ g/L)  
    Fmoc Deriv.