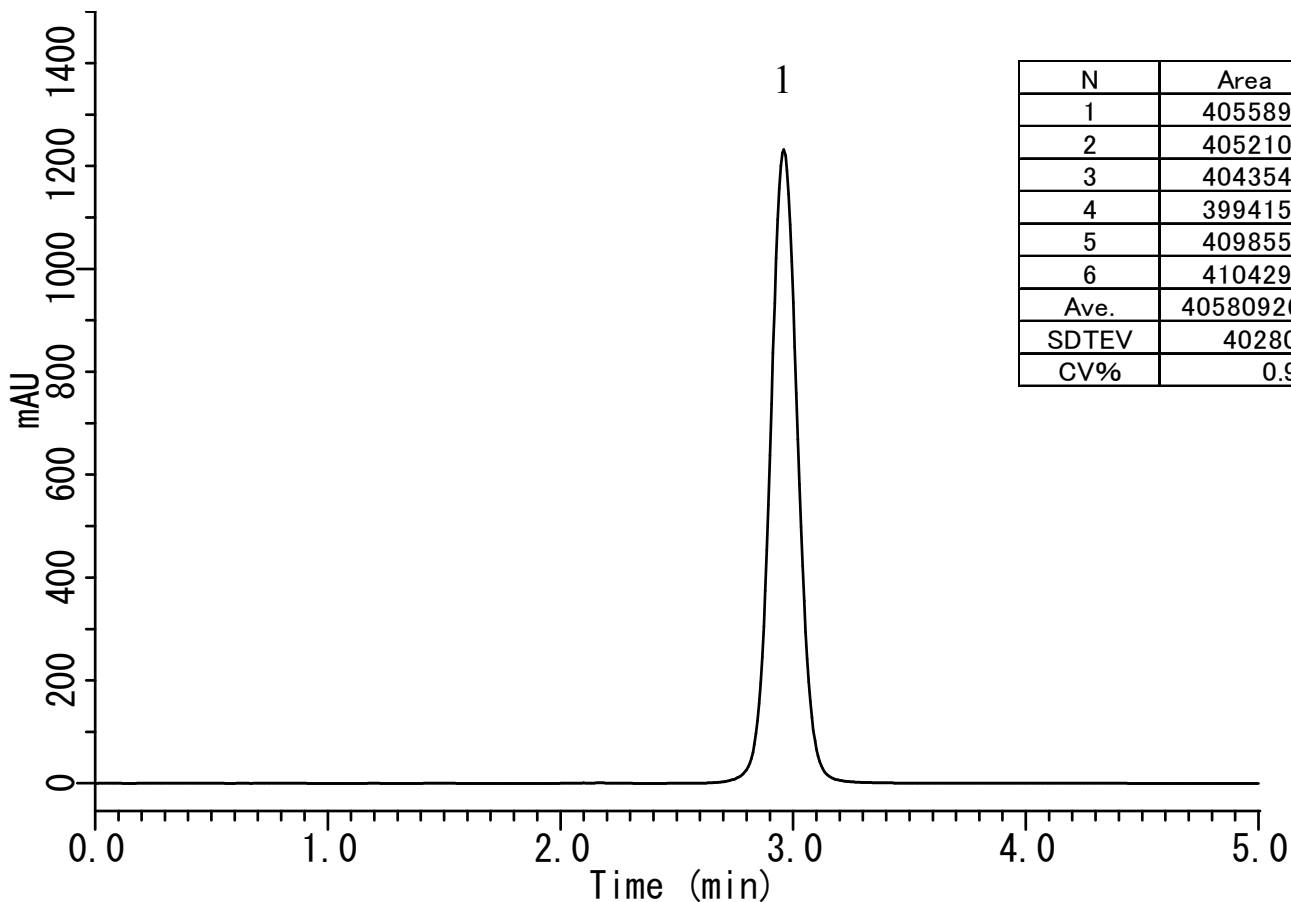


InertSearch™ for LC

Inertsil® Applications

Analysis of Simvastatin

Data No. LA708-0696



Conditions

System : GL-7400 HPLC system
Column : Inertsil ODS-SP (3µm, 33 x 4.6 mm I.D.)
Column Cat. No. : 5020-87035
Eluent : A) CH₃CN
 : B) 0.1% H₃PO₄
 : A/B = 50/50, v/v
Flow rate : 2.4 mL/min
Col. Temp. : 25 °C
Detection : UV 238 nm (GL-7450 UV detector)
Injection Vol. : 5 µL

Analyte

1. Simvastatin (1500 mg/L)