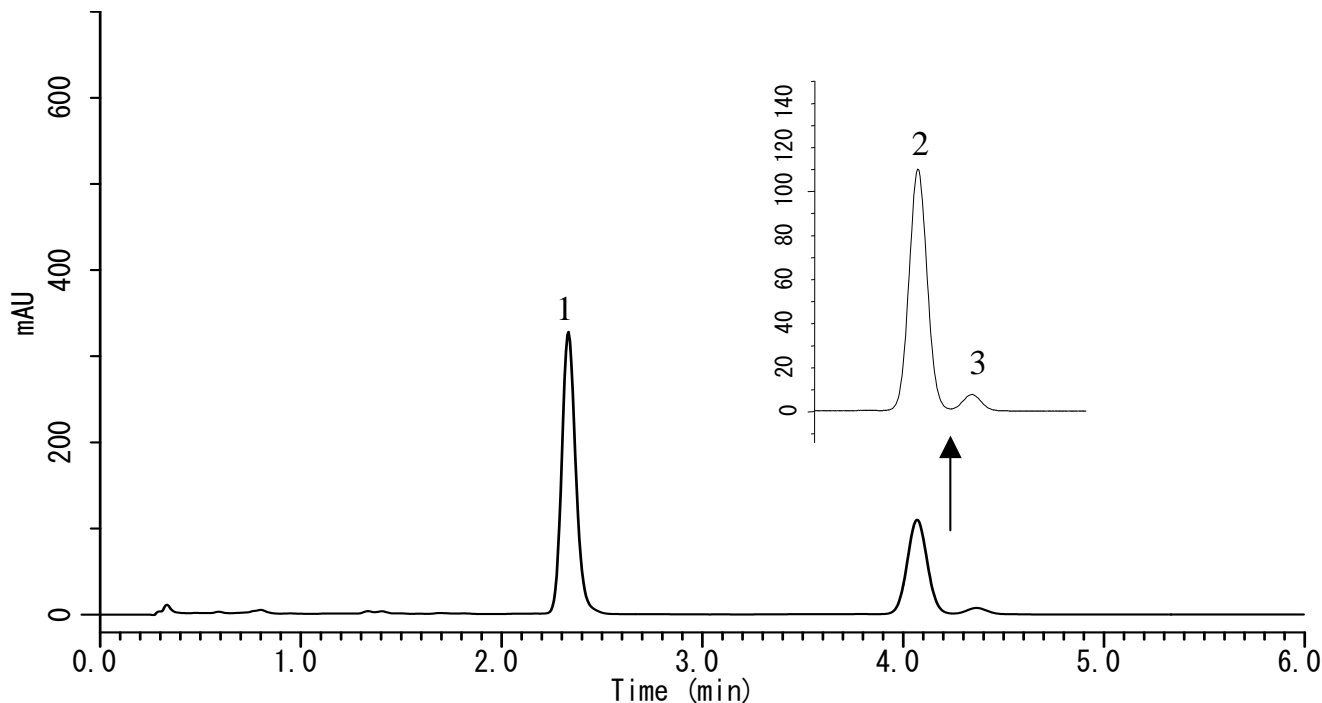


# InertSearch™ for LC

Inertsil® Applications

## Analysis of Carotenoides

Data No. LA711-0696



### Conditions

**System** : GL-7400 HPLC system  
**Column** : Inertsil ODS-3 (2  $\mu$  m, 50 x 3.0 mm I.D.)  
**Column Cat. No.** : 5020-84662  
**Eluent** : CH<sub>3</sub>CN  
**Flow Rate** : 1.2 mL/min (14MPa)  
**Col. Temp.** : 45 °C  
**Detection** : VIS 470 nm (GL-7452A PDA Detector)  
**Injection Vol.** : 20  $\mu$  L

### Analyte

1. Lycopene ( 10 mg/L )  
2.  $\alpha$ -Carotene ( 10 mg/L )  
3.  $\beta$ -Carotene ( 10 mg/L )