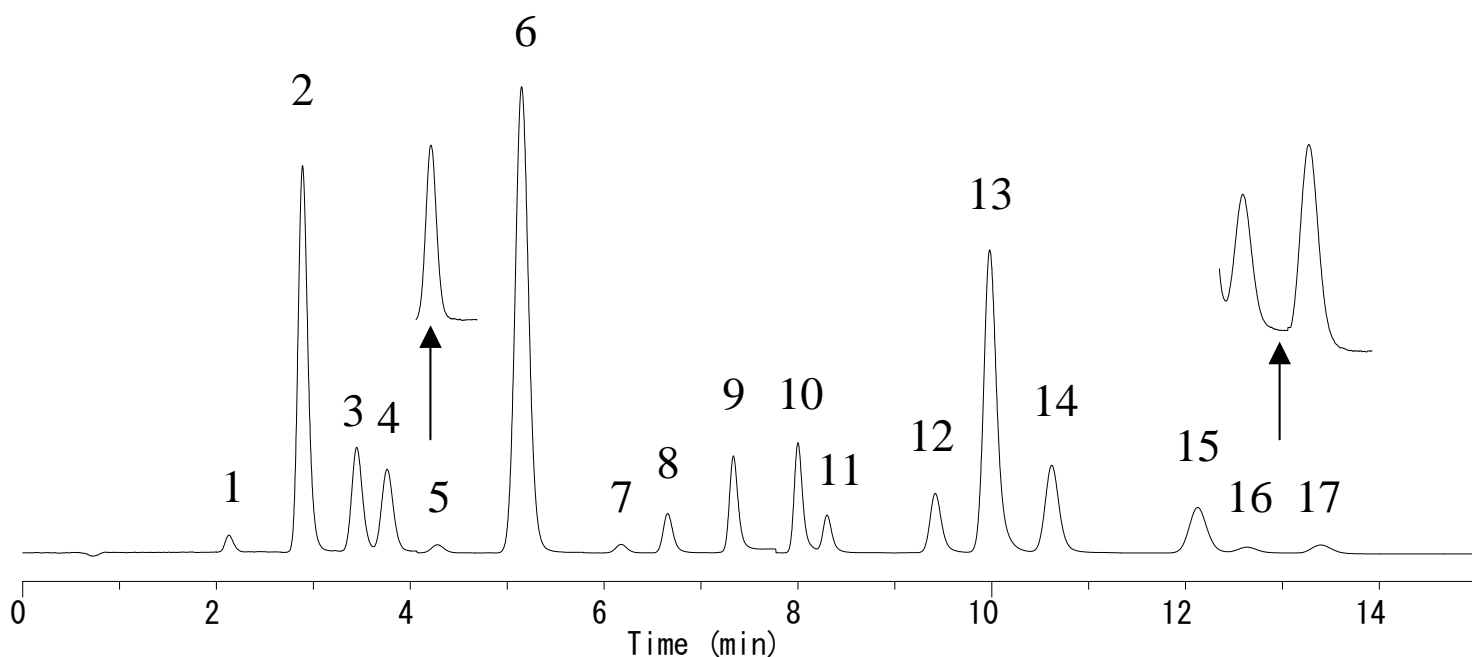


InertSearch™ for LC

Inertsil® Applications

Analysis of Polycyclic aromatic hydrocarbons (PAHs) (Using FL Detector)

Data No. LA731-0871



Conditions

System : GL-7400 HPLC system
Column : Inertsil ODS-P HP (3 μ m, 100 x 3.0 mm I.D.)
Column Cat. No. : 5020-87036
Eluent : A) CH₃OH
 B) H₂O
 A/B = 80/20 - 2 min- 80/20 - 3 min - 100/0, v/v

Flow rate : 0.6 mL/min

Col. Temp. : 40 °C

Detection : FL with time program (GL-7453A FL Detector)

Time (min)	Ex. (nm)	Em.(nm)
0.0	285	325
4.0	296	367
4.7	250	400
5.7	358	435
6.4	320	391
7.0	258	355
7.7	280	380
8.8	295	420
11.2	300	400
13.1	300	500

Injection Vol. : 5 μ L

Sample : PAHs

Analyte:

1. Naphthalene	(10 μ g/L)
2. 1-Methylnaphthalene	(10 μ g/L)
3. Acenaphthene	(10 μ g/L)
4. Fluorene	(10 μ g/L)
5. Phenanthrene	(10 μ g/L)
6. Anthracene	(10 μ g/L)
7. Fluoranthene	(10 μ g/L)
8. Pyrene	(10 μ g/L)
9. Triphenylene	(10 μ g/L)
10. Benzo-[a]-anthracene	(10 μ g/L)
11. Chrysene	(10 μ g/L)
12. Benzo-[b]-fluoranthene	(10 μ g/L)
13. Benzo-[k]-fluoranthene	(10 μ g/L)
14. Benzo-[a]-pyrene	(10 μ g/L)
15. DiBenz-[a,h]-anthracene	(10 μ g/L)
16. Benzo-[g,h,i]-perylene	(10 μ g/L)
17. Indeno-[1,2,3-cd]pyrene	(10 μ g/L)

Reference [LA337](#), [LA607](#)