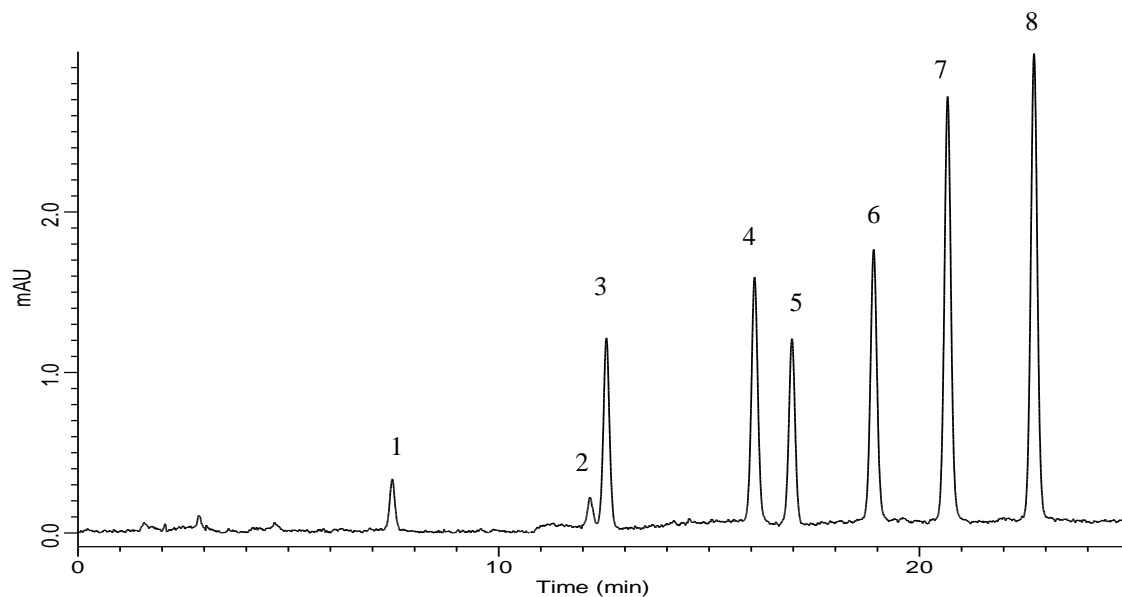


## Analysis of Catechin



### Conditions

**System** : GL-7400HPLC system  
**Column** : Inertsil ODS-3 (5 $\mu$ m, 150 x 4.6 mm I.D.)  
**Column Cat. No.** : 5020-01731  
**Eluent** : A) CH<sub>3</sub>OH  
           B) 10 mM NaH<sub>2</sub>PO<sub>4</sub>  
           A/B = 10/90 - 30 min - 50/50, v/v  
**Flow Rate** : 1.0 mL/min  
**Col. Temp.** : 40 °C  
**Detection** : UV 280 nm (GL-7450 UV Detector)  
**Injection Vol.** : 10 $\mu$ L

### Analyte

1. Galocatechin (GC)	(2.0 mg/L)
2. Epigallocatechin (EGC)	(2.0 mg/L)
3. Catechin (C)	(2.0 mg/L)
4. Epigallocatechin Gallate (EGCg)	(2.0 mg/L)
5. Epicatechin (EC)	(2.0 mg/L)
6. Galocatechin Gallate (GCg)	(2.0 mg/L)
7. Epicatechin Gallate (Ecg)	(2.0 mg/L)
8. Catechin Gallate (Cg)	(2.0 mg/L)