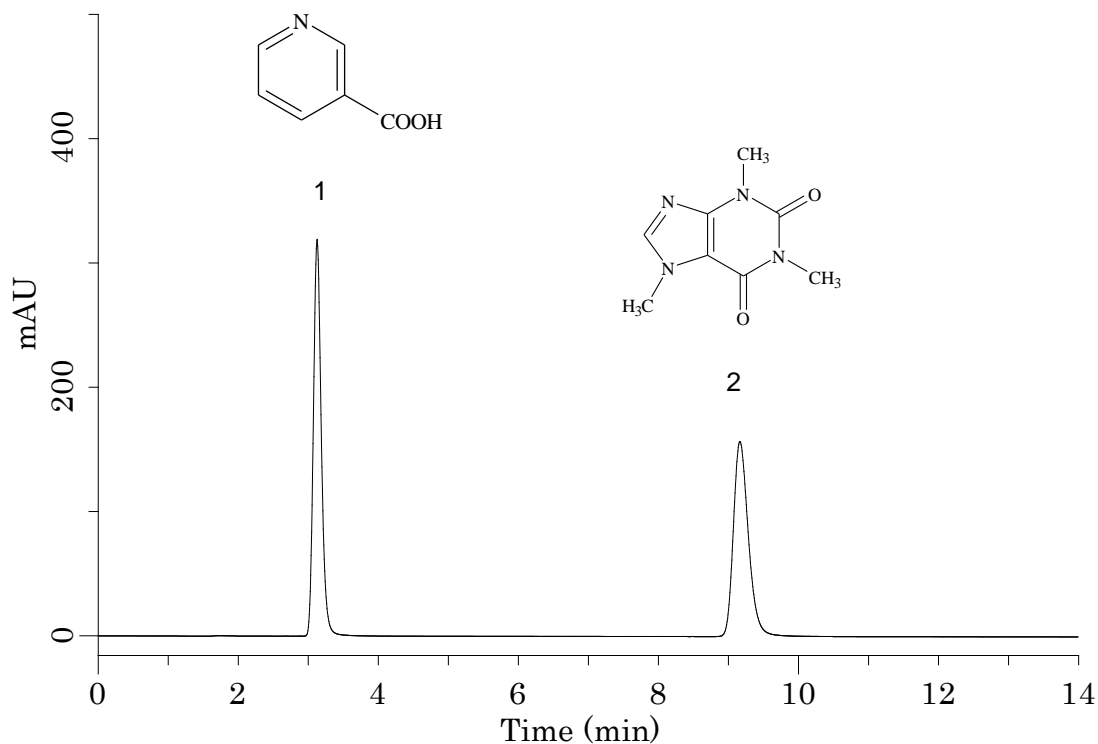


## Analysis of Nicotinic acid and caffeine



### Conditions

**System** : GL-7400 HPLC System  
**Column** : Inertsil ODS-2 (5  $\mu$ m, 150 x 4.6 mm I.D.)  
**Column Cat. No.** : 5020-01101  
**Eluent** : 1.1g /L 1-Sodium octanesulfonate in  
 [CH<sub>3</sub>OH / 0.05 M NaH<sub>2</sub>PO<sub>4</sub> (pH 3.0, H<sub>3</sub>PO<sub>4</sub>) = 20/80, v/v]  
**Flow Rate** : 0.7 mL/min.  
**Col. Temp.** : 35 °C  
**Detection** : UV 260 nm (GL-7450 UV Detector)

### Analyte

1. Nicotinic acid  
 2. Caffeine