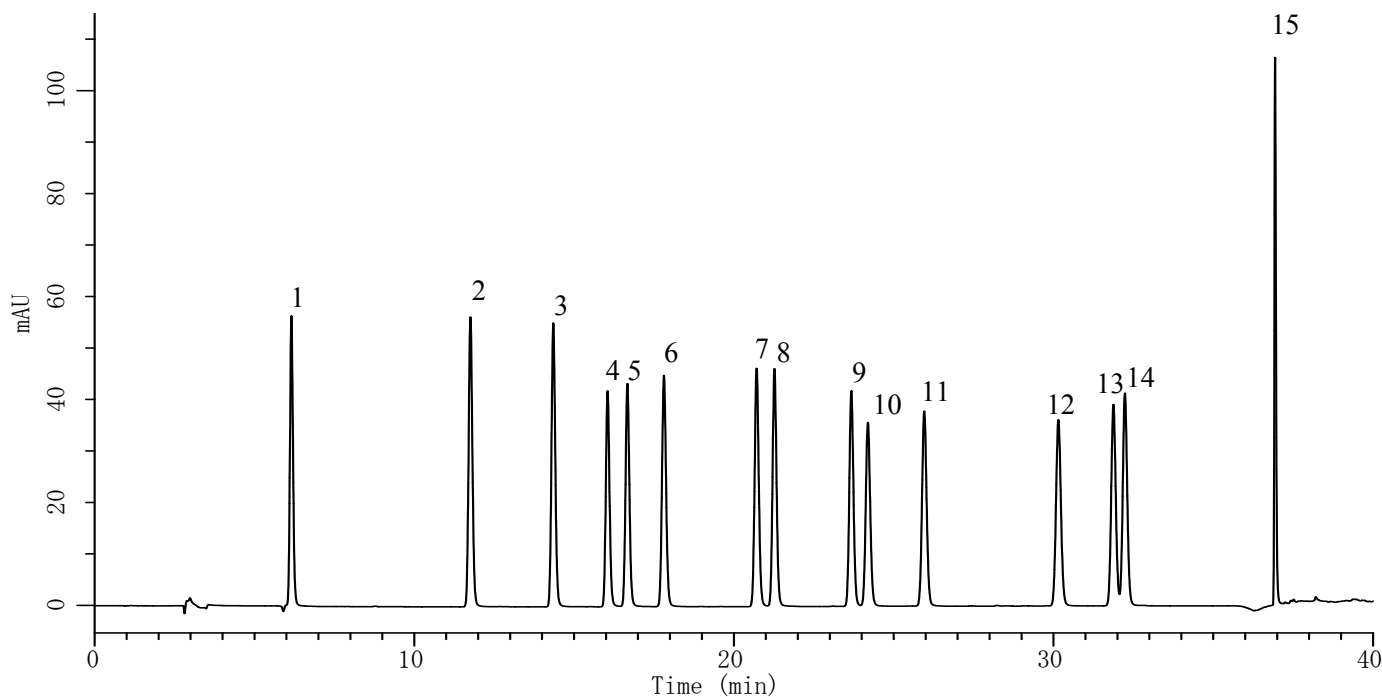


# InertSearch™ for LC

Inertsil® Applications

## Analysis of 15 Sulfa drugs

Data No. LA758-0626



### Conditions

**System** : GL-7400 HPLC system  
**Column** : Inertsil Sulfa C18 (3 $\mu$ m, 150 x 4.6 mm I.D.)  
**Column Cat. No.** : 5020-07535  
**Eluent** : A) CH<sub>3</sub>CN/CH<sub>3</sub>COOH = 777.66/3.15, w/w  
B) CH<sub>3</sub>COOH/H<sub>2</sub>O = 3.15/997, w/w  
A/B = 0/100 -33min- 33/67 -3min- 90/10 -4min- 90/10, v/v  
**Flow Rate** : 1.0 mL/min  
**Col. Temp.** : 40 °C  
**Detection** : UV 270 nm (GL-7452A PDA Detector)  
**Injection Vol.** : 10  $\mu$ L

### Analyte

1.	Sulfanilamide	(10 mg/L)
2.	Sulfacetamide	(10 mg/L)
3.	Sulfadiazine	(10 mg/L)
4.	Sulfathiazole	(10 mg/L)
5.	Sulfapyridine	(10 mg/L)
6.	Sulfamerazine	(10 mg/L)
7.	Sulfadimidine	(10 mg/L)
8.	Sulfamethoxyipyridazine	(10 mg/L)
9.	Sulfamonomethoxin	(10 mg/L)
10.	Sulfachlorpyridazine	(10 mg/L)
11.	Sulfamethoxazole	(10 mg/L)
12.	Sulfabenzamide	(10 mg/L)
13.	Sulfadimethoxine	(10 mg/L)
14.	Sulfaquinoxaline	(10 mg/L)
15.	Sulfanitran	(10 mg/L)