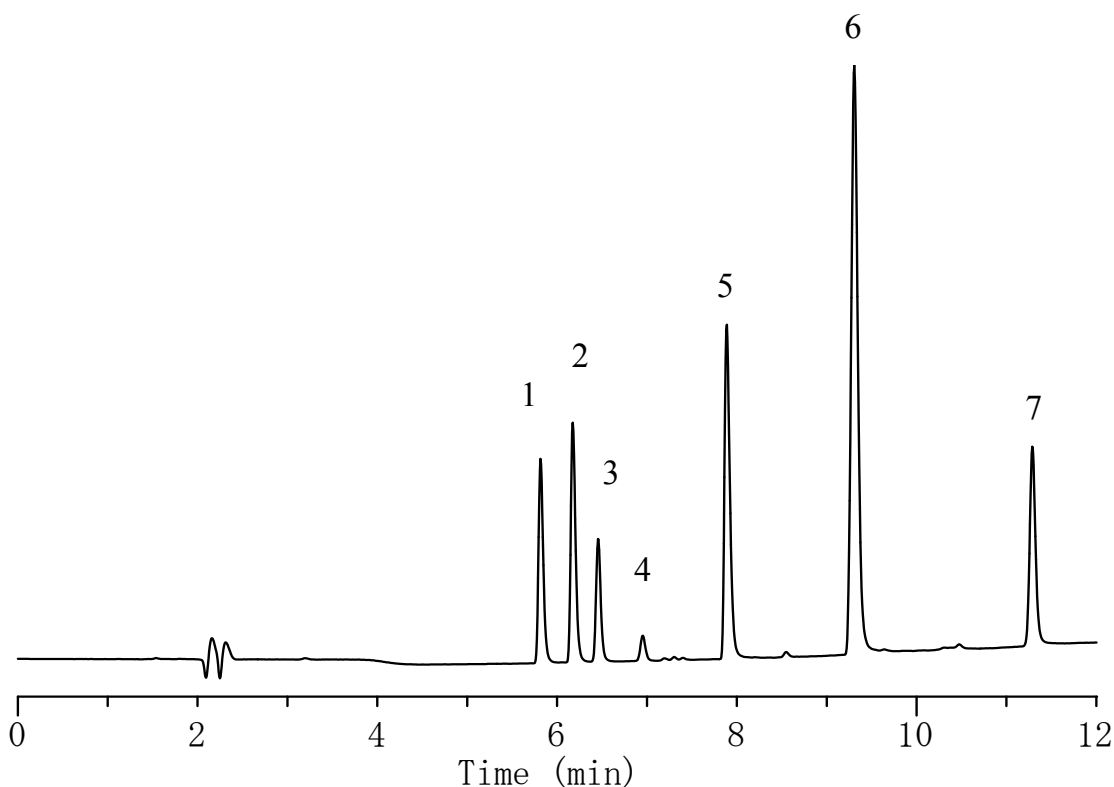


InertSearch™ for LC

Inertsil® Applications

Analysis of 7 Sulfa drugs (II)

Data No. LA760-0626



Conditions

System : GL-7400 HPLC system
Column : Inertsil Sulfa C18 (3 μ m, 150 x 4.6 mmI.D.)
Column Cat. No. : 5020-07535
Eluent : A) CH₃CN/ H₂O /CH₃COOH = 10/90/0.3, v/v/v
B) CH₃CN/ H₂O /CH₃COOH = 60/40/0.3, v/v/v
A/B = 100/0 -10 min- 0/100 -10 min- 0/100, v/v
Flow Rate : 1.0 mL/min
Col. Temp. : UV 265 nm (GL-7452A PDA Detector)
Detection : 40 °C
Injection Vol. : 10 μ L

Analyte

Standard samples II
1. Trimethoprim (5 mg/L)
2. Ormethoprim (5 mg/L)
3. Carbadox (2 mg/L)
4. Thiamphenicol (5 mg/L)
5. Pyrimethamine (5 mg/L)
6. Difurazon (10 mg/L)
7. Nalidixic acid (3 mg/L)