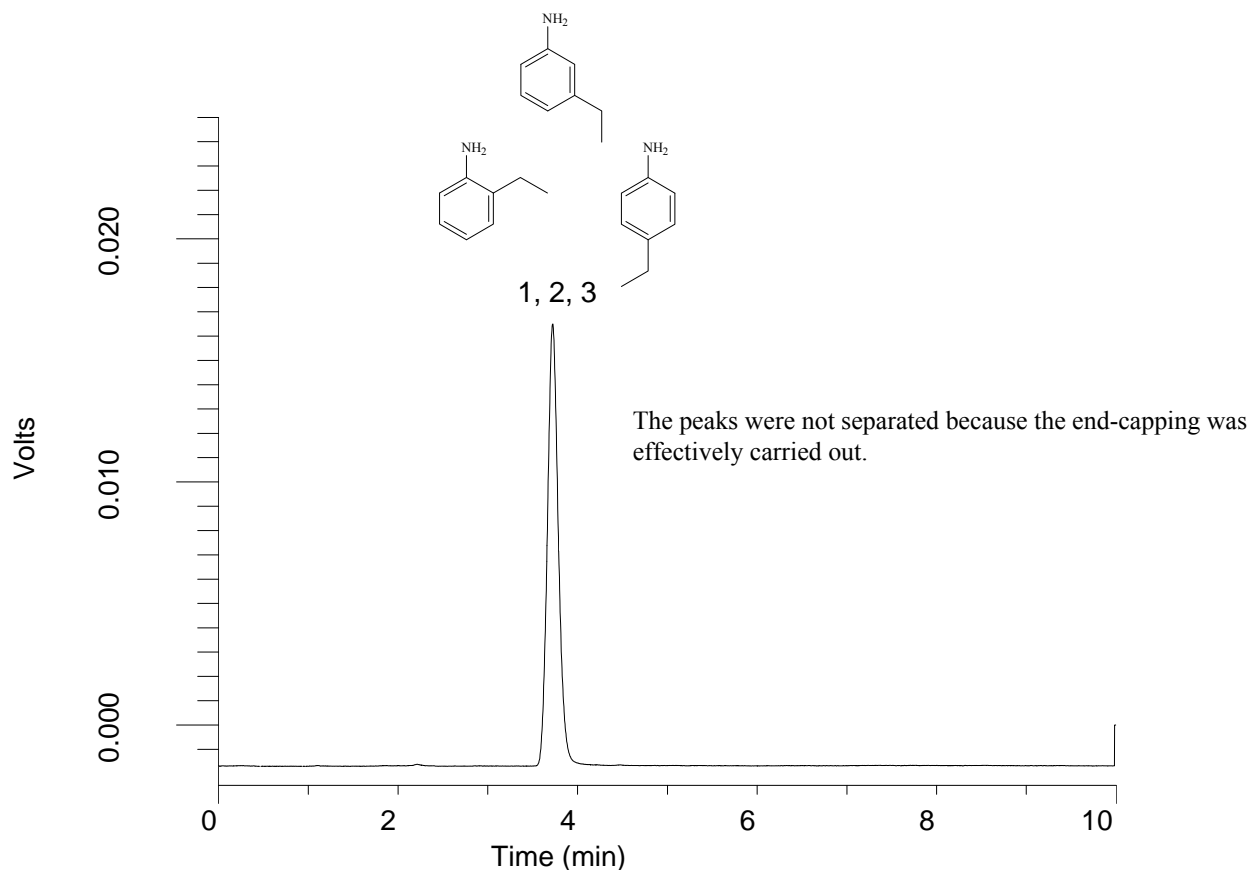


# InertSearch™ for LC

Inertsil® Applications

## Analysis of Ethylanilines (WP300 C18)

Data No. LA771-0000



### Conditions

**Column** : Inertsil WP300 C18 (5 $\mu$ m, 150 x 4.6 mm I.D. )  
**Column Cat. No.** : 5020-05845  
**Eluent** : A) CH<sub>3</sub>OH  
B) H<sub>2</sub>O  
A/B = 49/51, v/v  
**Flow Rate** : 1.0 mL/min  
**Col. Temp.** : 40 °C  
**Detection** : UV 254 nm

### Analyte

1. 2-Ethylaniline  
2. 3-Ethylaniline  
3. 4-Ethylaniline