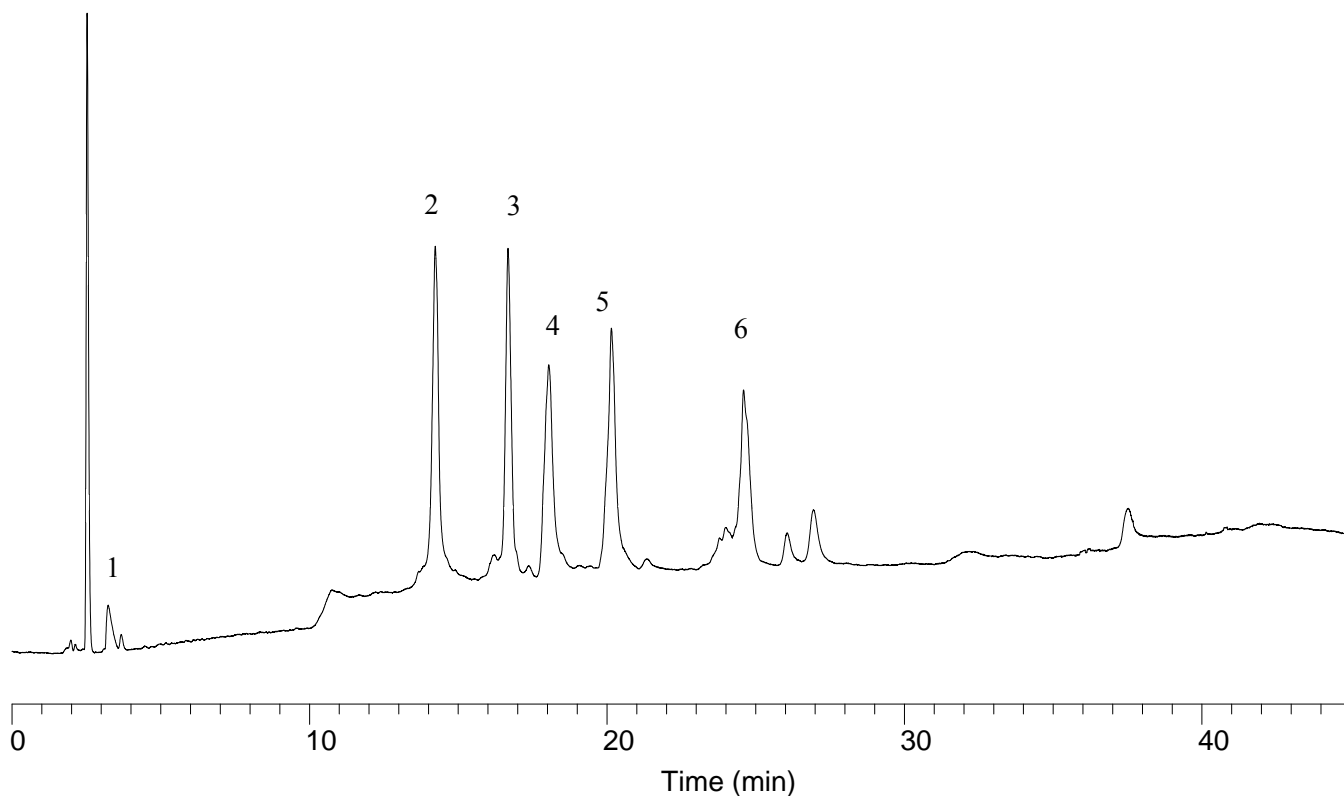


# InertSearch™ for LC

Inertsil® Applications

## Analysis of Peptides and proteins (WP300 C18)

Data No. LA772-0000



### Conditions

**Column** : Inertsil WP300 C18 (5 µm, 150 x 4.6 mm I.D.)  
**Column Cat. No.** : 5020-05845  
**Eluent** : A) CH<sub>3</sub>CN/0.05 % TFA = 80/20, v/v  
B) CH<sub>3</sub>CN/0.05 % TFA = 10/90, v/v  
A/B = 0/100 – 30 min – 100/0 – 10 min – 100/0, v/v  
**Flow Rate** : 1.0 mL/min  
**Col. Temp.** : 30 °C  
**Detection** : UV 280 nm

### Analyte

1. DL-Phenylalanine (FW 165)  
2. Cytochrome C (FW 13,000)  
3. Lysozyme (FW 14,000)  
4. BSA (FW 66,000)  
5. α-Chymotrypsinogen A (FW 25,600)  
6. Ovalbumin (FW 45,000)