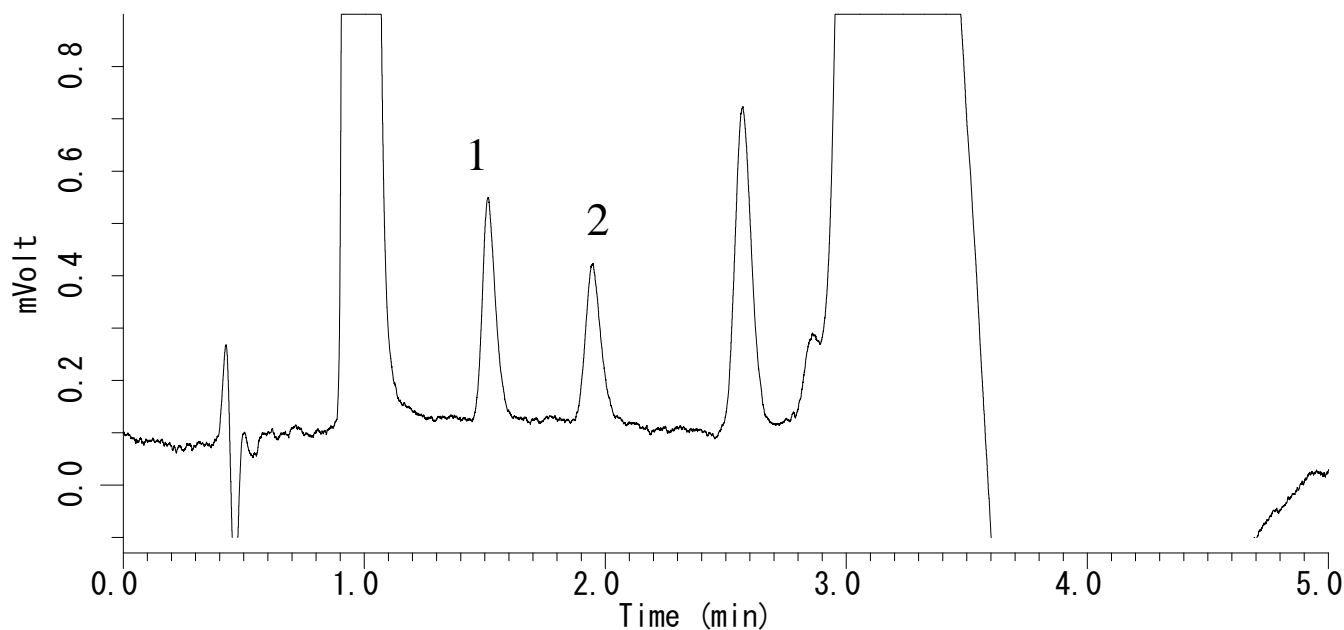


InertSearch™ for LC

Inertsil® Applications

Rapid analysis of DNPH-aldehydes (5 min)

Data No. LA782-0871



Conditions

System : LC800 HPLC System
Column : Inertsil ODS-4 (2 μ m, 100 x 2.1 mm I.D.)
Column Cat. No. : 5020-81204
Eluent : A) CH₃CN
B) H₂O
A/B = 55/45 – 2.2 min – 55/45 – 0.1 min – 95/5 – 1.1 min
– 95/5 – 0.1 min – 55/45 – 1.5 min – 55/45, v/v
Flow rate : 0.5 mL/min
Col. Temp. : 40 °C
Detection : UV 360 nm (10 mm UV cell, Response 0.5 sec)
Injection Vol. : 5 μ L (No Waste Pickup)
Sample : DNPH-derivatives of 13 aldehydes in CH₃CN

Analyte:

1. DNPH-Formaldehyde (5 μ g/L)
2. DNPH-Acetaldehyde (5 μ g/L)

Reference : LC technical note 22 and 31,
[LA318](#), [LA403](#), [LA405](#), [LA406](#), [LA580](#), [LA594](#), [LA595](#), [LA596](#)