

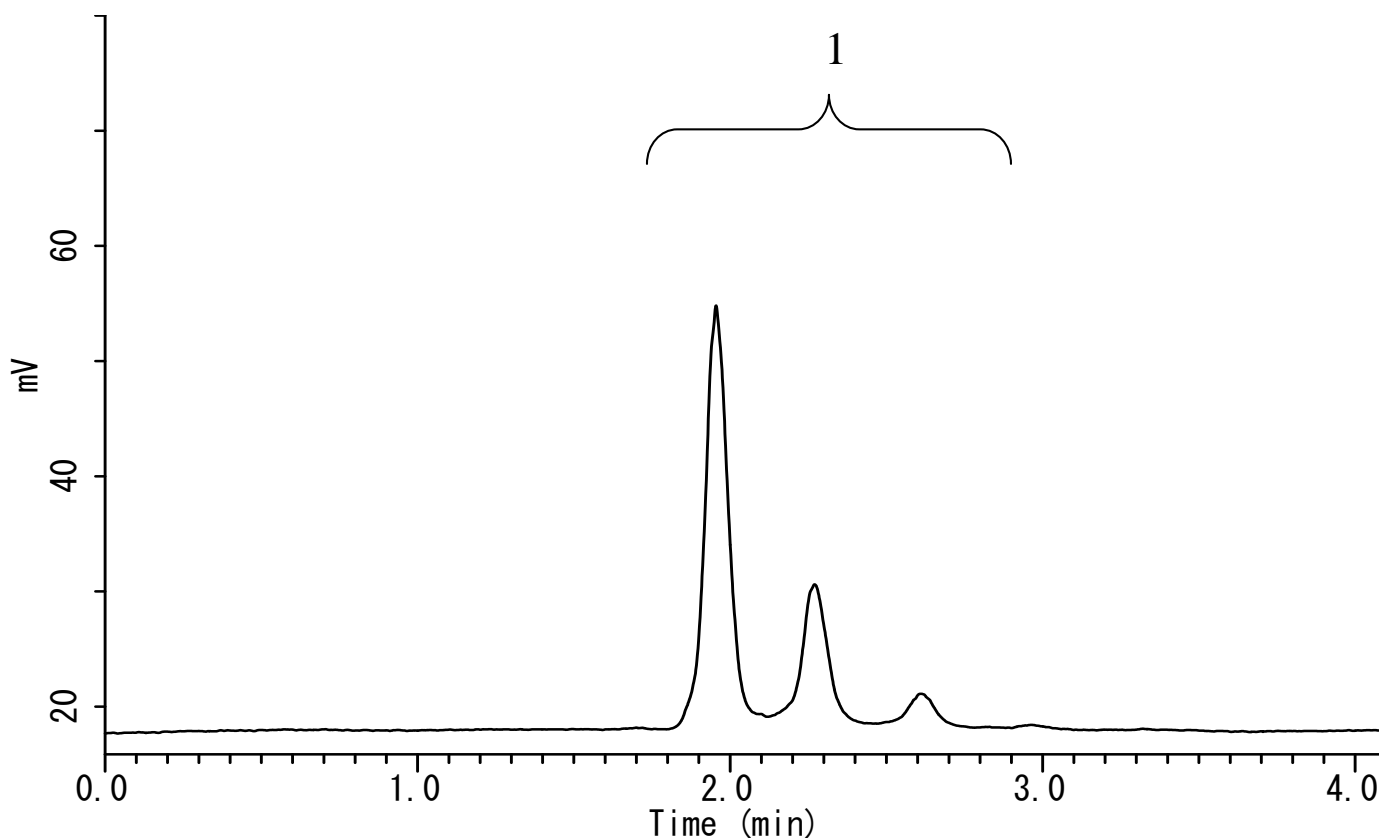
# InertSearch™ for LC

Inertsil® Applications

## Analysis of Phosphatidylcholine by HPLC-ELSD

Data No. LA789-0696

### ELSD



### Conditions

**System** : LC800 HPLC system  
**Column** : Inertsil ODS-4 (2  $\mu$  m, 50 x 3.0 mm I.D.)  
**Column Cat. No.** : 5020-81212  
**Eluent** : A) 2-Propanol  
          : B) 0.05 % TFA  
          : A/B = 75/25 – 3.5 min – 90/10 – 0.5 min – 90/10, v/v  
**Flow rate** : 0.6 mL/min  
**Col. Temp.** : 50 °C  
**Detection** : ELSD (SoftA ELSD Model300S)  
**Injection Vol.** : 2  $\mu$  L  
**Sample** : Compound lipid (Sphingophospholipid)

### Analyte:

1. Phosphatidylcholine (PC) 1000 mg/L