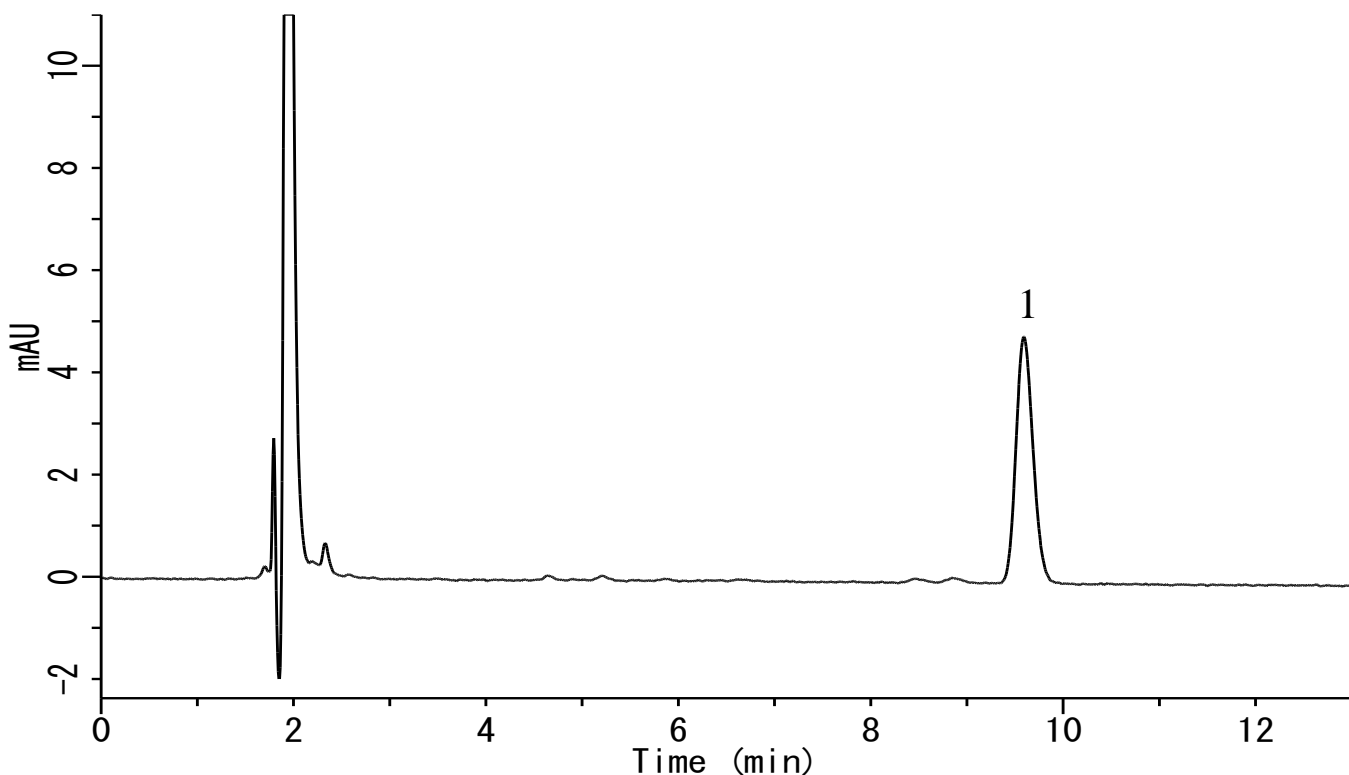


Analysis of Tocopherol acetate in cosmetic



Conditions

System : GL-7400 HPLC system
Column : Inertsil ODS-4 (5 μ m, 150 x 3.0 mm I.D.)
Column Cat. No. : 5020-03925
Eluent : A) CH₃CN
 : B) CH₃OH
 : A/B = 80/20, v/v
Flow rate : 0.4 mL/min
Col. Temp. : 40 °C
Detection : UV 285 nm (GL-7452A PDA Detector)
Injection Vol. : 5 μ L
Sample : lotion

Analyte:

1. Tocopherol acetate